

Allied

INNOVATIVE DESIGNS
FOR CREATIVE SPACES



$$a = 3 \quad b = 4$$

$$a^2 + b^2 = c^2$$

$$c^2 = 3^2 + 4^2$$

$$c^2 = 25$$

$$c = 5$$



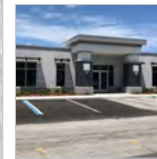


Today



INNOVATIVE DESIGNS
FOR CREATIVE SPACES

2019



New Corporate Facility

Beautiful new office space with upgraded information systems allows smoother operations and continued growth.

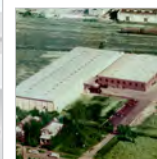
1989



Addition of 150,000 sq ft Facility

Warehousing and Assembly operations are moved to an expanded operating center.

1976



New Factory Built in 1976

The Jacksonville, Florida Manufacturing Plant is expanded by 50,000 sq ft.

1969



Allied Introduces The All-Plastic Multi-purpose Table

Allied embraces innovative design, crafting the all-plastic multi-purpose table. Allied sets up new operations in Jacksonville, Florida.

1950



DenGre Founded

DenGre is founded on the principles of hard work and high quality. Allied pioneers replacement desk tops using the new state-of-the-art material, Lamalite. Lodi, New Jersey.

2020



New Website Premieres

Allied launches the new site showcasing "Innovative Designs for Creative Spaces" and introducing six new product lines.

2016 - 2019



Factory and Warehouse Upgrades

Multi-million dollar improvements in equipment and implementation of Lean Manufacturing efficiencies.

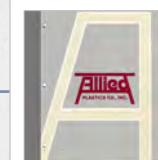
1985



Allied Introduces the CRT Data Table

Allied introduces the Data Table, one of the first CRT Computer tables with folding legs.

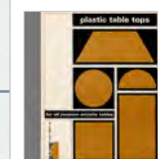
1972



Allied Expands Product Offering

Allied expands lines to include all types of tables for Education, Office and Commercial use.

1960



DenGre Expands Line

Allied introduces the first of its activity table lines.

1945



America Celebrates!

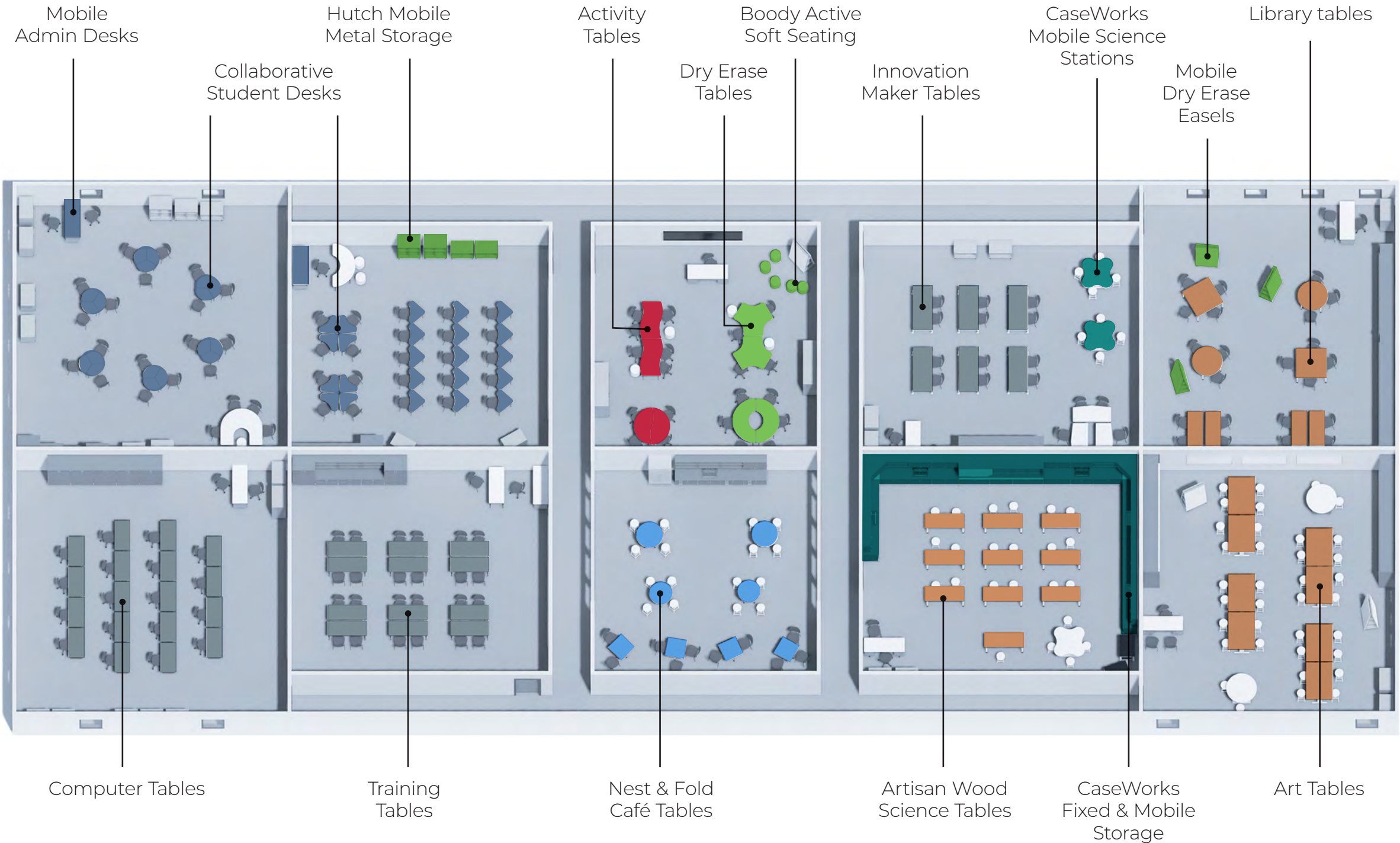
A new era of optimism dawns in America! Art Craft Countertops is founded by Michael "Mickey" Berger in Jamaica, New York.

Innovative Designs For Creative Spaces

We invite you take a tour of the Allied Furniture Collections. Here you can see the latest design innovations for today's more active and dynamic collaborative learning environments, as well as the most complete selection of time-tested classics that have made Allied the most trusted name in educational furniture for over 75 years.

Table of Contents:

Allied Classroom	6
Teacher & Admin Mobile Desks	12
Allied Aero Table Collection	14
Allied Velocity Collection	18
Allied Classic Collection	26
Innovation Maker Series	32
8000 Series Utility Tables	38
Computer & Training Tables	42
Café Tables	48
Nest & Fold Café Tables	50
Muse Art Tables	54
Library Tables	56
Artisan Wood Stools	58
Artisan Wood Science Carts	59
Artisan Wood Science Tables	60
8000 Series Science Tables	64
Dry Erase Aero Tables	68
Dry Erase Velocity Tables	72
Dry Erase Classic Tables	76
Dry Erase Innovation Makers' Tables	80
Dry Erase Nest & Fold Café Tables	84
Mobile Dry Erase Easels.	88
Hutch Mobile Metal Storage	90
Boody Active Soft Seating	94
CaseWorks Mobile & Fixed Storage Systems	96
Sustainable Practices	106
Warranty, Terms & Conditions	107



Allied manufactures desks and tables that meet ADA standards. Please see website for details. 

Note: Digital symbols for CAD, Revit, CET and 2020 are available upon request. Please see website for details.



The Allied Classroom tables are built to stand up to heavy everyday use, year after year. With a variety of shapes, sizes and colors, you are sure to find the exact table you need for any activity, whether collaborative learning in a group setting or one-on-one instruction. The oval legs add a touch of contemporary styling, with extra strength, versatility and value.



Student Desk Collection Shown with Fusion Maple Laminate Tops, Platinum Edge Bands and Aero Legs with Optional Casters

The Allied Student Desk Collection combines the best of tradition with design innovation to provide the greatest variety of classroom solutions for today's most challenging educational environments. These creative designs allow greater flexibility and adaptation of the classroom space to suit both individual and group learning.



Delta Desk



Palm Desk



Pinnacle Desk

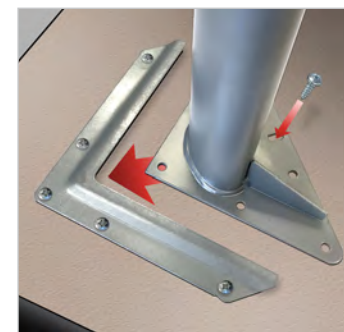


Pie Desk



Legs Include Adjustable Nylon Swivel Glides

Optional Casters Add Approximately 2" Height



Precision Leg Fastening System



Plastic Book Box Available In Black Or Platinum

Collaborative Student Desk Collection

Features

- Contemporary height-adjustable AERO leg
- All steel legs with adjustable nylon swivel glides or optional casters
- High-pressure laminate (HPL) work surface
- Precision leg fastening system
- Unique shapes allow single or group configurations
- Vinyl edge available in popular colors

Specifications

Work Surface: 1¼" thick 45 lb. density particleboard with sealed backer for balanced construction. Long-life high pressure laminate (HPL) surface with form fitting mechanically fastened edge banding.

Leg Construction: 11 gauge top plate welded to 16 gauge 2½" x 1½" oval tubing. Insert is 2.3"x 1.28" chrome plated 16 gauge tube. Each leg is finished with a threaded cap and adjustable nylon swivel glides or optional casters.

Precision Leg Fastening System: 14 gauge factory-installed steel bracket ensures perfect placement, ease of assembly and maximum stability.

Table Heights: Work surface height is adjustable in one inch increments using an extended point set screw.

- Standard legs adjust from 26 - 35". ([Order ST](#))
- Low-Range legs adjust from 17 - 26". ([Order LR](#))

Options

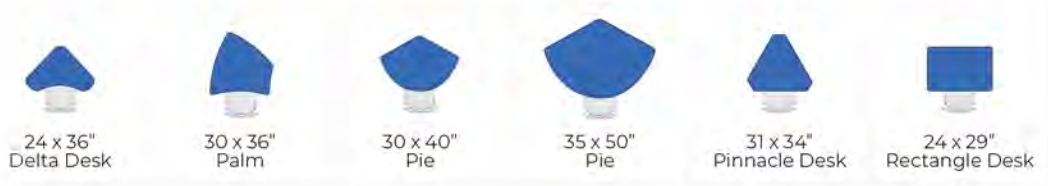
Book Box: Rigid one-piece construction. High impact plastic available in black or platinum color. 15 x 12 x 4¾". ([Order BBPBK black or BBPPL platinum](#))

Locking Casters: 2½" swivel mounted locking casters replace standard glides. ([Order CA60B](#))

Back Pack Hook: 11 gauge top plate connected to ¼" diameter wire hook. Fully chrome plated. ([Order HOOK](#))

Model No.	Description Shape and Size	Weight
ARO2436DLT	Delta 24x36" Single Student Desk	37
ARO2436DLTDE	Delta 24x36" Single Student Desk, Dry Erase	37
ARO3036PA	Palm 30x36" Single Student Desk	50
ARO3036PADE	Palm 30x36" Single Student Desk, Dry Erase	50
ARO3040PIE	Pie 30x40" Single Student Desk	70
ARO3040PIEDE	Pie 30x40" Single Student Desk, Dry Erase	70
ARO3550PIE	Pie 35x50" Single Student Desk	80
ARO3550PIEDE	Pie 35x50" Single Student Desk, Dry Erase	80
ARO3431PN	Pinnacle 34x31" Single Student Desk	48
ARO3431PNDE	Pinnacle 34x31" Single Student Desk, Dry Erase	48
ARO2429	Rectangular 24x29" Single Student Desk	50
ARO2429DE	Rectangular 24x29" Single Student Desk, Dry Erase	50

Desk Top Shapes



Laminate Finishes

Walnut WA	Fusion Maple FM	Light Oak OK	Mahogany MA	Wild Cherry 75	Nepal Teak TK
Black BK	Blue BL	Red RD	Yellow YL	Graphite Nebula 96	Gray Nebula 10

DryErase

Apple AG	Chrome Yellow CRY	Ice Gray IG	Sky Blue SB	White WMB
-----------------	--------------------------	--------------------	--------------------	------------------

Vinyl Edge Colors

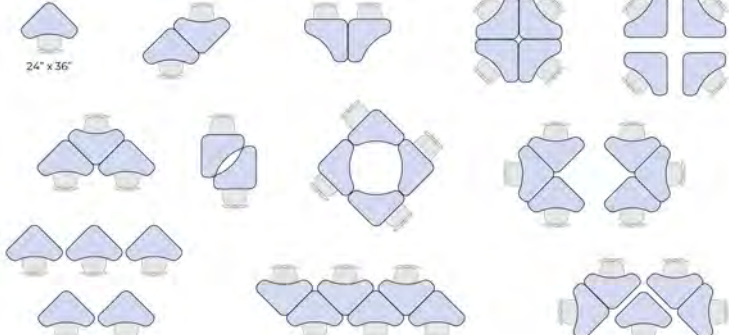
Black BK	Platinum PL	Navy Blue BL	Red RD	Purple PU
Dynamic Blue DB	Electric Lime EL	Stop Red SR	Charcoal CH	

Leg Colors

Black BK	Platinum PL
Order L-20ARBK	Order L-20ARPL

Delta Student Desk

Individual and Group Configurations



Palm Student Desk

Individual and Group Configurations



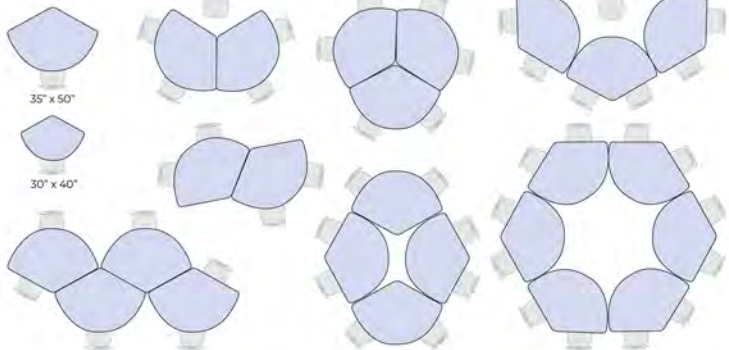
Palm Student Desk

Individual and Group Configurations

Pie Student Desk

Individual and Group Configurations.

Two sizes:
30x40" and
35x50"



Pinnacle Student Desk

Individual and Group Configurations



Pinnacle Student Desk

Individual and Group Configurations



Laminate Finishes



Custom sizes and laminate colors are available. Contact your dealer for pricing. Minimum order quantities may apply.



Dual Pedestal Desk



Single Pedestal Desk



4 Smooth Rolling Casters for Mobility. 5th Stability Wheel Prevents Tipping.



Full-Suspension Glides. Letter or Legal Size Hanging File Drawer

Allied Teacher / Administrator Desk

Features

- Easily configurable mobile desk for administrators and educators
- Commercial grade 3 drawer pedestals
- Managed key system allows master key use and cylinder replacement
- Sized to allow maximum use of space and use with task chairs

Specifications

Work Surface: 45lb. density 1¼" thick particleboard with laminate backer sheet for balanced construction. Stain and scratch resistant high pressure laminate (HPL) surface. Mechanically fastened T-mold vinyl edge banding. **Height:** 30" work surface height with casters.

Mobile Pedestal: Box/Box/File configuration with numbered lock, master key and replaceable lock cylinders. Commercial grade 16 gauge structure with 18-gauge panels. Metal drawer slides allow for drawer removal. Plate casters provide ease of movement.

Pedestal Dimensions: 15½"W x 19¾"D x 23¾"H (with casters)

Modesty Panel: 16-gauge powder coated steel with smooth U-channel edges. Wire access at top of panel.

Frame and Base Color



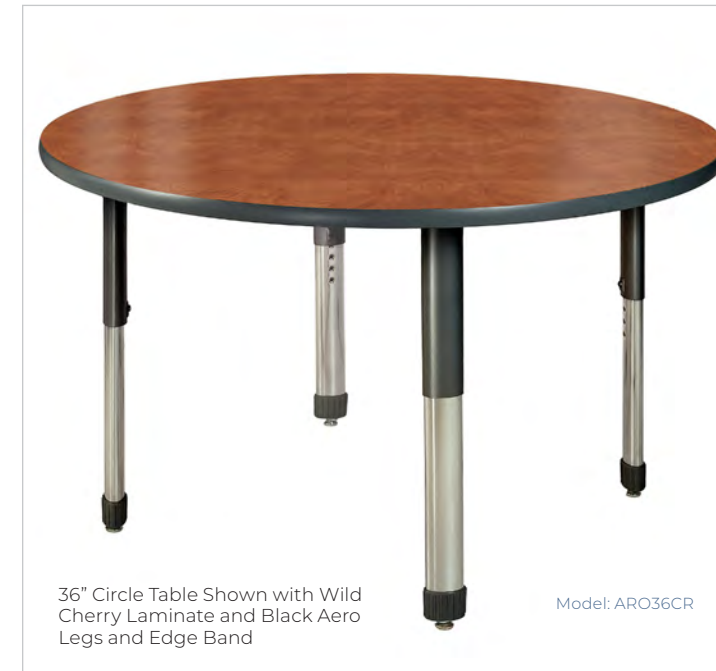
Model No.	Description Shape and Size	Weight
MTSP2454	24x54" Rectangular Top Single Pedestal Mobile Teacher Desk	125
MTDP2467	24x67" Rectangular Top Dual Pedestal Mobile Teacher Desk	145

Vinyl Edge Colors





Aero 36x72" Kidney Table Shown with
Gray Nebula Laminate Top, Platinum
Aero Legs and Edge Band
Model: ARO372K



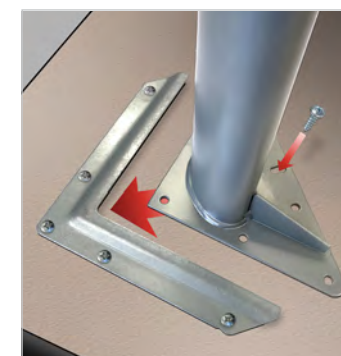
36" Circle Table Shown with Wild
Cherry Laminate and Black Aero
Legs and Edge Band

Model: ARO36CR



Legs Include Adjustable
Nylon Swivel Glides

Optional Casters Add
Approximately 2" Height



Precision Leg Fastening
System



Plastic Book Box Available In
Black Or Platinum

Allied AERO Collection Tables

Features

- Contemporary height-adjustable AERO leg
- High-pressure laminate (HPL) work surface
- Precision leg fastening system
- Multiple size & shape combinations
- Vinyl edge available in popular colors
- Choice of leg colors: (Black L-20ARBK, Platinum L-20ARPL)

Specifications

Work Surface: 1¼" thick 45 lb. density particleboard with sealed backer for balanced construction. Long-life high pressure laminate surface with form fitting mechanically fastened T-mold edge banding.

Leg Construction: 11 gauge top plate welded to 16 gauge 2½" x 1½" oval tubing. Insert is 2.3"x1.28" chrome plated 16 gauge tube. Each leg is finished with a threaded cap and adjustable nylon swivel glides or optional casters.

Precision Leg Fastening System: 14 gauge factory-installed steel bracket ensures perfect placement, ease of assembly and maximum stability.

Table Heights: Work surface height is adjustable in one inch increments using an extended point set screw. Standard legs adjust from 26 - 35". Low-Range legs adjust from 17 - 26". (order LR)

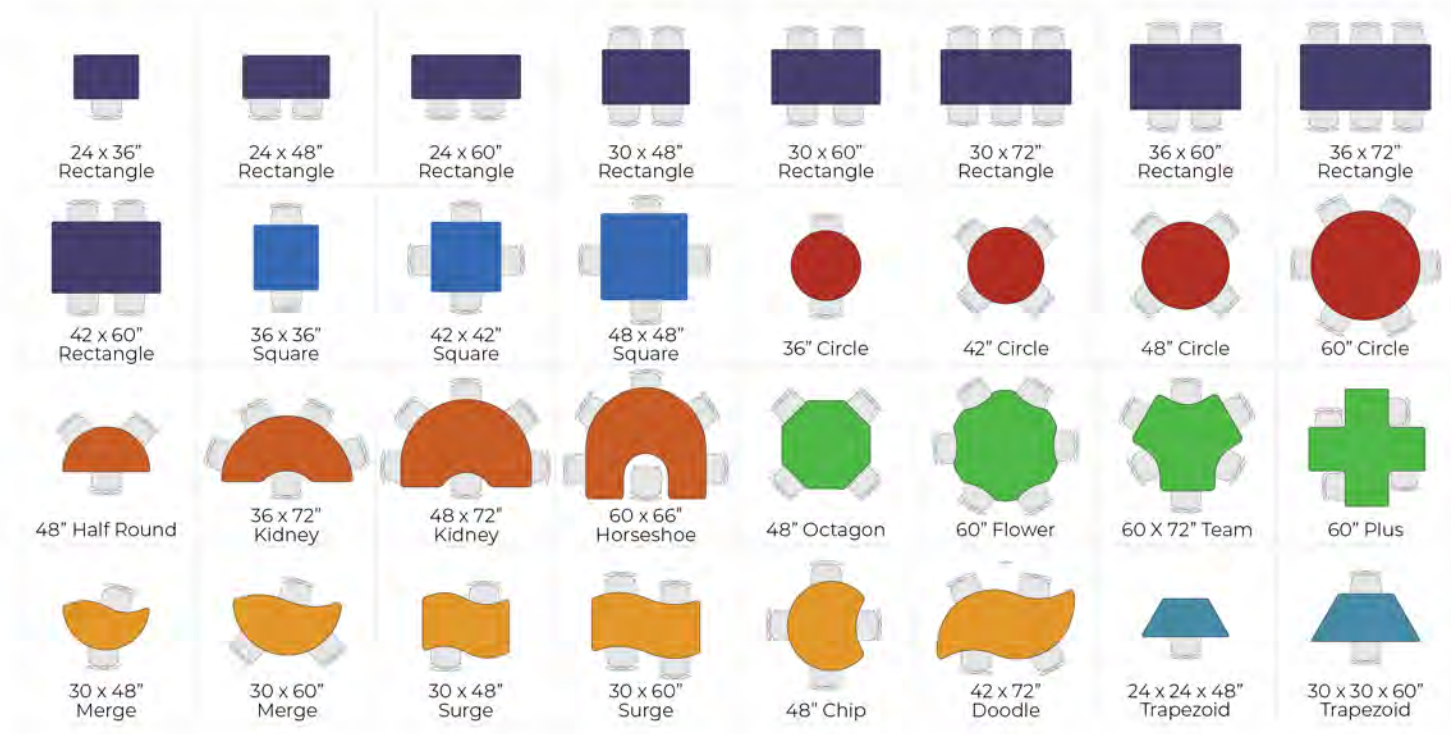
Options

Book Box: Rigid one-piece construction. High impact plastic available in black or platinum color. 15 x 12 x 4¾" (Order BBPBK black or BBPPL platinum)

Locking Casters: 2½" swivel mounted locking casters replace standard glides. (Order CA60B)

Back Pack Hook: 11 gauge top plate connected to ¼" diameter wire hook. Fully chrome plated. (Order HOOK)

Table Top Shapes



Laminate Finishes



Vinyl Edge Colors



Leg Colors



Model No.	Description Shape and Size	Weight
ARO2436	24x36" Rectangle Table	55
ARO2448	24x48" Rectangle Table	65
ARO2460	24x60" Rectangle Table	75
ARO3048	30x48" Rectangle Table	75
ARO3060	30x60" Rectangle Table	90
ARO3072	30x72" Rectangle Table	105
ARO3660	36x60" Rectangle Table	105
ARO3672	36x72" Rectangle Table	120
ARO4260	42x60" Rectangle Table	110
ARO3636	36x36" Square Table	70
ARO4242	42x42" Square Table	80
ARO4848	48x48" Square Table	105
ARO36CR	36" Circle Table	55
ARO42CR	42" Circle Table	75
ARO48CR	48" Circle Table	90
ARO60CR	60" Circle Table	130
ARO48HR	48" Half Round Table	55
ARO48CP	48" Chip Table	88
ARO4272DD	42x72" Doodle Table	105
ARO60FL	60x60" Flower Table	130
ARO666H	60x66" Horseshoe Table	130
ARO372K	36x72" Kidney Table	120
ARO472K	48x72" Kidney Table	125
ARO3048MG	30x48" Merge Table	71
ARO3060MG	30x60" Merge Table	81
ARO48OT	48" Octagon Table	90
ARO6060PS	60x60" Plus Table	106
ARO3048SG	30x48" Surge Table	80
ARO3060SG	30x60" Surge Table	90
ARO6072TM	60x72" Team Table	160
ARO24TP	24x24x48" Trapezoid Table	55
ARO30TP	30x30x60" Trapezoid Table	65

For Dry Erase table tops, see page 68.

Custom sizes and laminate colors are available. Contact your dealer for pricing. Minimum order quantities may apply.



Velocity 49x64" Sweep Table Shown with White Laminate Top and Dynamic Blue Edge Band and Legs with Optional Casters in Platinum.
Model: VELSWEEP-LG

Velocity 30x70" Span Tables Shown with White Laminate Top and Dynamic Blue Edge Band and Legs with Optional Casters in Platinum.
Model: VELSPAN-LG

Velocity 60x60" Apex Table Shown with White Laminate Top and Dynamic Red Edge Band and Legs with Optional Casters in Platinum.
Model: VEL60APEX

The Allied Velocity series of activity tables offer superior stability and ease of installation. In addition to our most popular shape and size combinations, Velocity offers unique table shapes to provide original and versatile solutions that facilitate flexible spatial use, and stimulate creativity in the learning environment.



Velocity 60x60" Apex Table Shown with Graphite Nebula Laminate Top, Charcoal Velocity Legs and Edge Band
Model: VEL60APEX



49x64" Velocity Sweep Table Shown with Custom White Driftwood Laminate Top and Dynamic Blue Legs & Edge Band

Model: VELSWEEP-LG



Legs Available In Five Coordinated Colors



Optional 3" Casters Available in Matching Colors



Precision Leg Fastening System

Allied Velocity Collection Tables

Features

- Modern height-adjustable Velocity leg
- Environmentally friendly powder coat upper & lower leg assembly
- High-pressure laminate (HPL) work surface
- Precision leg fastening system
- Multiple size & shape combinations
- Vinyl edge available in popular colors
- Choice of leg colors:

Specifications

Work Surface: 1¼" thick 45 lb. density particleboard with sealed backer for balanced construction. Long-life high pressure laminate surface with form fitting mechanically fastened edge banding.

Leg Construction: 11 gauge top plate welded to 14 gauge tubing. Leg upper consists of powder coated 2" round tubing. Insert is 1.8" powder coated 16 gauge tubing. Each leg is finished with a molded insert that accepts the included nylon glides or optional casters.

Precision Leg Fastening System: 14 gauge factory-installed steel bracket ensures perfect placement, ease of assembly and maximum stability.

Table Heights: Work surface height is adjustable in one inch increments using an extended point set screw. Legs adjust from 24 - 37". With optional 3" casters, legs adjust from 27 - 40"

Options

Locking Casters: 3" swivel mounted locking casters replace standard glides. (Order CA75B)

Table Top Shapes



60x60" Apex Table with Wild Cherry HPL Top, Stop Red Legs and Edge Band
Model: VEL60APEX

60x60" Jax Table with Fusion Maple HPL Top, Electric Lime Legs and Edge Band
Model: VEL60JAX

49x64" Sweep Table with Custom Fossil Shale HPL Top, Dynamic Blue Legs and Edge Band
Model: VELSWEEP-LG

For Dry Erase table tops, see page 72.

Model No.	Description Shape and Size	Weight
VEL48APEX	48x48" Apex Table	110
VEL60APEX	60x60" Apex Table	120
VEL48JAX	48x48" Jax Table	115
VEL60JAX	60x60" Jax Table	125
VELLENS-SM	47x56" Lens Table	110
VELLENS-LG	57x71" Lens Table	120
VEL60OVAL	36x60" Oval Table	105
VEL72OVAL	48x72" Oval Table	130
VELPOND	46x60" Pond Table	120
VEL60PROP	60" Prop Table	120
VELSPAN-SM	24x51" Span Table	110
VELSPAN-LG	30x70" Span Table	135
VELSWEEP-SM	37x48" Sweep Table	120
VELSWEEP-LG	49x64" Sweep Table	110



57x71" Lens Table with Custom Island HPL Top, Electric Lime Legs and Charcoal Edge Band
Model: VELLENS-LG

60" Prop Table with Custom White Driftwood HPL Top, Dynamic Blue Legs and Edge Band
Model: VEL60PROP

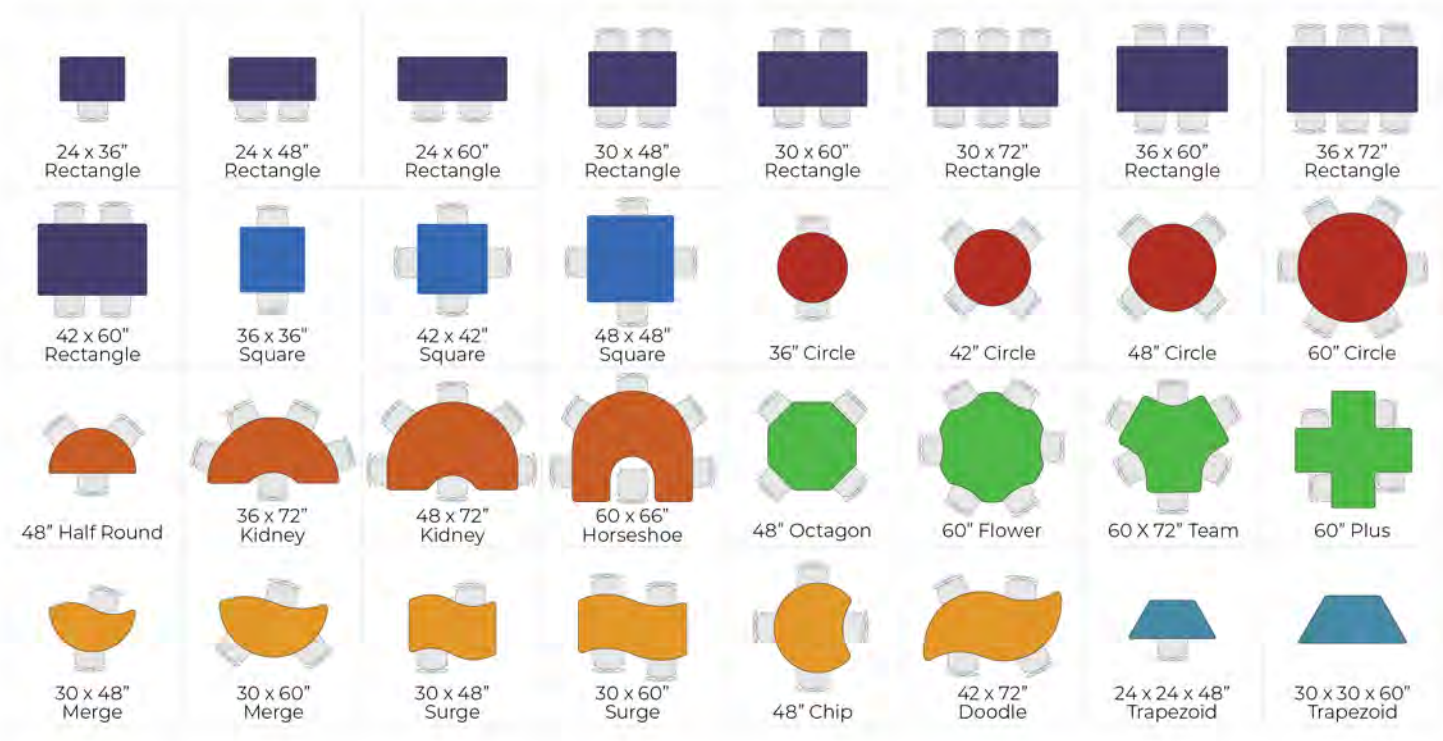
46x60" Pond Table with Custom Oiled Soapstone HPL Top, Stop Red Legs and Edge Band
Model: VELPOND



48x72" Oval Table with Walnut HPL Top, Charcoal Legs and Edge Band
Model: VEL72OVAL

30x70" Span Table with Light Oak HPL Top, Platinum Legs and Edge Band
Model: VELSPAN-LG

Table Top Shapes



For Dry Erase table tops, see page 72.

Model No.	Description Shape and Size	Weight
VEL2436	24x36" Rectangular Table	60
VEL2448	24x48" Rectangular Table	65
VEL2460	24x60" Rectangular Table	85
VEL3048	30x48" Rectangular Table	80
VEL3060	30x60" Rectangular Table	90
VEL3072	30x72" Rectangular Table	120
VEL3660	36x60" Rectangular Table	105
VEL3672	36x72" Rectangular Table	130
VEL4260	42x60" Rectangular Table	115
VEL3636	36x36" Square Table	75
VEL4242	42x42" Square Table	95
VEL4848	48x48" Square Table	110
VEL36CR	36" Circle Table	67
VEL42CR	42" Circle Table	80
VEL48CR	48" Circle Table	95
VEL60CR	60" Circle Table	100
VEL48HR	48" Half Round Table	60
VEL48CP	48" Chip Table	101
VEL4272DD	42x72" Doodle Table	110
VEL60FL	60x60" Flower Table	125
VEL666H	60x66" Horseshoe Table	120
VEL372K	36x72" Kidney Table	100
VEL472K	48x72" Kidney Table	120
VEL3048MG	30x48" Merge Table	76
VEL3060MG	30x60" Merge Table	86
VEL48OT	48" Octagon Table	95
VEL6060PS	60x60" Plus Table	100
VEL3048SG	30x48" Surge Table	85
VEL3060SG	30x60" Surge Table	85
VEL6072TM	60x72" Team Table	165
VEL24TP	24x24x48" Trapezoid Table	55
VEL30TP	30x30x60" Trapezoid Table	70



Custom sizes and laminate colors are available. Contact your dealer for pricing. Minimum order quantities may apply.



ME-Station
Mobile Dry Erase Easel
With Stop Red Frame.
Model: ME-Station

Caseworks
12-Unit Mobile Cubbies
Shown In Fusion Maple.
Model: ACWCUB12

W-Series 24x36" T-Leg Tables
With Grey Nebula Tops
and Black/Chrome Legs.
Model: W52436/LP45

Classic 60x66" Horseshoe
Table with Fusion Maple Top.
Legs and Edge bands
Shown In Navy Blue.
Model: CLS666H

Hutch Mobile Metal Storage
30" Cabinet With Totes.
Electric Lime Color.
Model: MMS30T

Boody Active Soft Seating
Shown In Sunflower, Scarlet and Marine.
Models: BDYSUNFLOWER, BDYSCARLET,
BDYMARINE

Classic 30x60" Trapezoid Tables
With Fusion Maple Tops.
Legs and Edge Bands Shown
In Stop Red and Platinum.
Model: CLS30TP

Classic 60" Circle Tables
with Fusion Maple Tops.
Legs and Edge Bands
Shown In Dynamic Blue
and Purple.
Model: CLS60CR

The Allied Classic Collection is considered the "Gold Standard" in the industry. Superior materials and workmanship bring you a value packed table that will look great and last for years. These tables are designed to exceed your highest expectations for durability. Ideal for classrooms, meeting rooms and community rooms.



Classic 48" Clover Tables Shown with Fusion Maple Tops and Edge Bands, with Platinum Legs
Model: CLS48CL



Classic Activity Tables Shown with Fusions Maple Laminate Tops



Legs Available In Six Coordinated Colors



Precision Leg Fastening System



Plastic Book Box Available In Black Or Platinum

Allied Classic Collection Tables & Desks

Features

- High-pressure laminate (HPL) work surface
- All steel adjustable legs with nylon swivel glides
- Precision leg fastening system
- Multiple size & shape combinations
- Vinyl edge available in popular colors
- Choice of leg colors

Specifications

Work Surface: 1¼" thick 45 lb. density particleboard with sealed backer for balanced construction. Long-life high pressure laminate (HPL) surface with form fitting mechanically fastened edge banding.

Leg Construction: Heavy duty tubular steel. Classic Series standard legs adjust in one inch increments using a two-point fastening system and are finished with a steel cap and nylon swivel glide. Classic Collection not available with casters.

Precision Leg Fastening System: 14 gauge factory-installed steel bracket ensures perfect placement, ease of assembly and maximum stability.

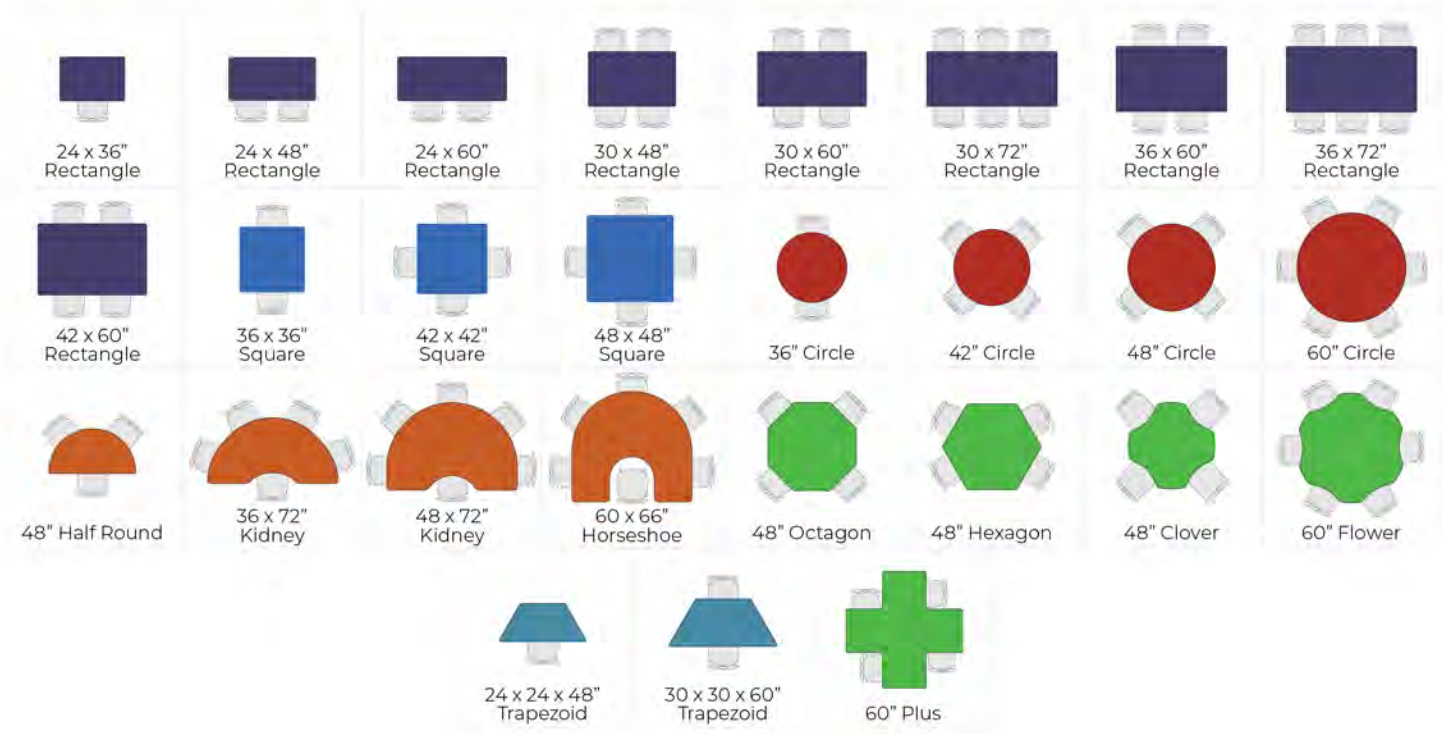
Table Heights: Three leg style options allow maximum flexibility of the work surface height:

- Standard legs adjust from 20½" to 30½"
- Low-Range legs adjust from 16½" - 25½" (Order LR)
- High-range legs adjust from 27½" - 36½" (Order HR)

Options

Book Box: Rigid one-piece construction. High impact plastic available in black or platinum color. 15 x 12 x 4¾".
(Order BBPBK black or BBPPL platinum)

Table Top Shapes



Model No.	Description Shape and Size	Weight
CLS2436	24x36" Rectangle Table	45
CLS2448	24x48" Rectangle Table	55
CLS2460	24x60" Rectangle Table	65
CLS3048	30x48" Rectangle Table	65
CLS3060	30x60" Rectangle Table	80
CLS3072	30x72" Rectangle Table	95
CLS3660	36x60" Rectangle Table	95
CLS3672	36x72" Rectangle Table	110
CLS4260	42x60" Rectangle Table	100
CLS3636	36x36" Square Table	60
CLS4242	42x42" Square Table	70
CLS4848	48x48" Square Table	95
CLS36CR	36" Circle Table	45
CLS42CR	42" Circle Table	65
CLS48CR	48" Circle Table	80
CLS60CR	60" Circle Table	120
CLS48HR	48" Half Round Table	45
CLS48CL	48" Clover Table	80
CLS60FL	60x60" Flower Table	120
CLS48HX	48" Hexagon Table	80
CLS666H	60x66" Horseshoe Table	120
CLS372K	36x72" Kidney Table	110
CLS472K	48x72" Kidney Table	115
CLS48OT	48" Octagon Table	80
CLS6060PS	60x60" Plus Table	96
CLS24TP	24x24x48" Trapezoid Table	45
CLS30TP	30x30x60" Trapezoid Table	55



For Dry Erase table tops, see page 76.

Custom sizes and laminate colors are available. Contact your dealer for pricing. Minimum order quantities may apply.



The ultimate table for industrial strength and maximum workspace versatility. Precision laser-cut steel framework and large work surfaces make this table ideal for the most demanding laboratory, mechanical and shop applications.



All Steel Frame. Precision Laser Cut and Welded



Optional Hardwood and Phenolic Tops Available



Three Table Heights or Custom Height



Dual-Lock Non-Marring Casters

Allied Innovation Maker Tables

Features

- Modern industrial multi-purpose Maker Table
- Choice of High Pressure Laminate (HPL), hardwood or phenolic tops
- Vinyl edge available in popular colors
- Dual-Lock casters allows table to be fixed or mobile
- Laser cut frame system made in USA to exacting standards
- Choice of powder-coat frame colors

Specifications

Structural Frame: 2" square, 14 gauge cold rolled steel with continuous laser cut tube fabrication. 14 gauge top plate for secure fastening of work surface. U-channel cross support of formed 16 gauge steel maintains lateral integrity of the table.

Table Heights: 30", 36", 40" or custom.

Casters: 3" dual-lock non-marring casters.

High Pressure Laminate: 1 1/4" thick 45lb. density particleboard sealed with laminate backer for balanced construction. Long-life HPL surface with form fitting mechanically fastened T-molded edge banding or optional glue on edge.

Optional Hardwood: 1 3/4" thick butcher block Parawood. Strong, durable and eco-friendly. (Order HW)

Optional Phenolic: 3/4" thick solid phenolic resin. Superior chemical resistance. 1/8" Beveled edges. (Order PH)

Frame Colors: Powder-coat finish in Stop Red, Electric Lime, Dynamic Blue, Platinum or custom.



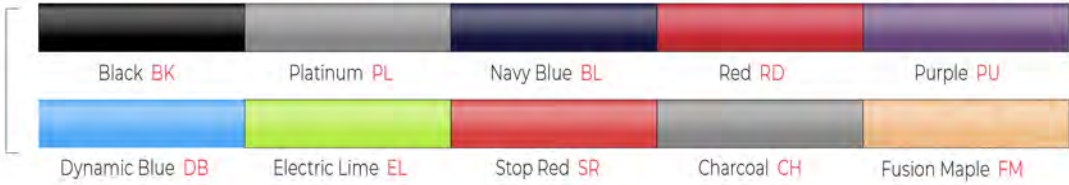
Table Top Shapes



Laminate Finishes



Vinyl Edge Colors



36x60" Innovation Table with Teak Laminate and Stop Red Powder-coat Frame and Black Edge Band
Model: AI366036



36x60" Innovation Table with Optional Solid Phenolic Resin Top and Electric Lime Powder-coat Frame
Model: AI366036PH



36x60" Innovation Table with Gray Nebula HPL Top and Platinum Powder-coat Frame and Charcoal Edge band
Model: AI366036



42x60" Innovation Table with Optional Solid Hardwood Top and Dynamic Blue Powder-coat Frame
Model: AI426036HW

Model No.	Description Shape and Size	Weight
AI366030	36x60" Steel Frame Table w/Casters. 30" Table Height. HPL Top	155
AI367230	36x72" Steel Frame Table w/Casters. 30" Table Height. HPL Top	165
AI426030	42x60" Steel Frame Table w/Casters. 30" Table Height. HPL Top	167
AI427230	42x72" Steel Frame Table w/Casters. 30" Table Height. HPL Top	180
AI366036	36x60" Steel Frame Table w/Casters. 36" Table Height. HPL Top	158
AI367236	36x72" Steel Frame Table w/Casters. 36" Table Height. HPL Top	168
AI426036	42x60" Steel Frame Table w/Casters. 36" Table Height. HPL Top	170
AI427236	42x72" Steel Frame Table w/Casters. 36" Table Height. HPL Top	183
AI366040	36x60" Steel Frame Table w/Casters. 40" Table Height. HPL Top	161
AI367240	36x72" Steel Frame Table w/Casters. 40" Table Height. HPL Top	171
AI426040	42x60" Steel Frame Table w/Casters. 40" Table Height. HPL Top	173
AI427240	42x72" Steel Frame Table w/Casters. 40" Table Height. HPL Top	183
AI426030HW	42x60" Steel Frame Table w/Casters. 30" Table Height. Solid Hardwood Top	183
AI427230HW	42x72" Steel Frame Table w/Casters. 30" Table Height. Solid Hardwood Top	131
AI426036HW	42x60" Steel Frame Table w/Casters. 36" Table Height. Solid Hardwood Top	146
AI427236HW	42x72" Steel Frame Table w/Casters. 36" Table Height. Solid Hardwood Top	161
AI426040HW	42x60" Steel Frame Table w/Casters. 40" Table Height. Solid Hardwood Top	171
AI427240HW	42x72" Steel Frame Table w/Casters. 40" Table Height. Solid Hardwood Top	173
Phenolic Upgrade	Upgrade to Solid ¾" Phenolic Resin Top	

For Dry Erase table tops, see page 80.

Custom sizes and laminate colors are available. Contact your dealer for pricing. Minimum order quantities may apply.



30x72" 8000 Series Utility Table
Shown with Oak Laminate Top
and Adjustable Height Legs
in Dove Gray with Matching
Frame & Edge Band
Model: 803072

Standard Fixed Height 30" Legs



Standard Square Tube Legs with
Adjustable Steel Glides.
Available in Chrome (Order C)
or Black Finish (Order BK)

The 8000 Series Utility Table is a staple in many settings due to its inherent design characteristics. Steel frames and strong 1 1/4" thick particleboard with high pressure laminate surface construction ensure that these tables provide many years of dependable service.

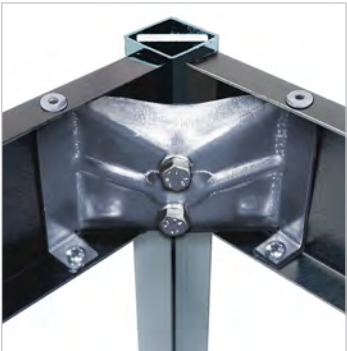


36x60" Utility Table Shown with
Gray Nebula Laminate Top,
Chrome Legs, Dove Gray Frame
and Edge Band
Model: 803660

Optional
Adjustable-Height Legs



Legs Telescope From 24 - 36"
Black (Order L-80ADJBK)
Dove Gray (Order L-80ADJDG)



Reinforced Twin-Bolt Corner
Brackets



Twin Set Screws Provide
Positive Leg Stability At All
Height Settings

Allied Utility Table Collection

Features

- All steel frame construction with enamel finish
- High-pressure laminate work surface
- Vinyl T-mold edge
- Chrome plated legs with adjustable steel glides
- Many sizes available
- Premium Twin-Bolt leg fastening system

Specifications

Work Surface: 1 1/4" thick, 45 lb. density particleboard with premium scratch and stain resistant high-pressure laminate (HPL). Backer sheet for balanced construction. Mechanically fastened T-mold edge banding.

Frame Construction:

16 gauge 1 1/4" square tubular steel legs with adjustable steel glides available in black or chrome finish. 16 gauge 3 1/4" apron available in complementary black or gray finish. 14 gauge steel corner brackets with premium Twin-Bolt fastening system.

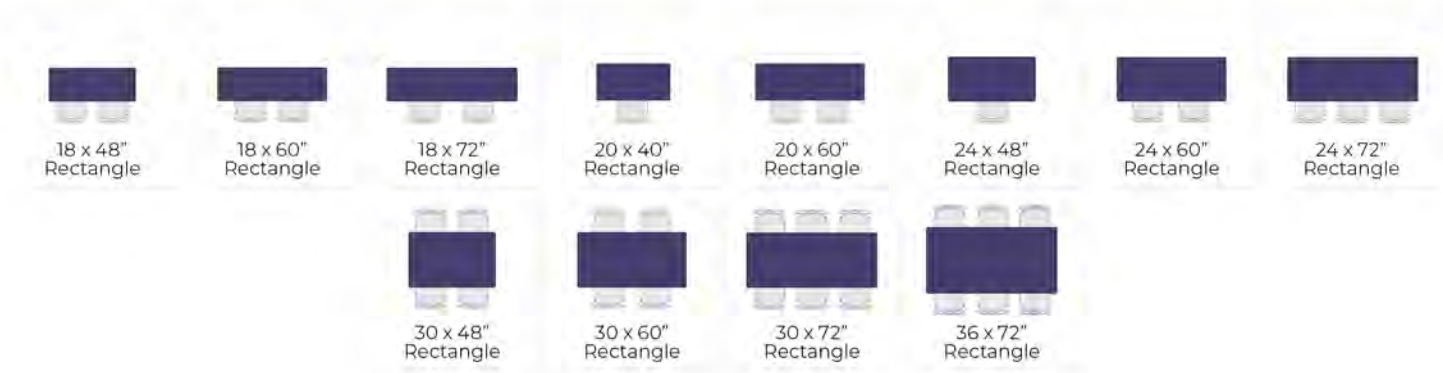
Standard Table Height: Work surface height of 30".

Optional Adjustable Legs: Legs telescope from 24 - 36" in 1" increments. Twin set screws provide rigid leg stability at any height setting. (Order L-80ADJ)



All Steel Frame

Table Top Shapes



Laminate Finishes

Walnut **WA**

Light Oak **OK**

Mahogany **MA**

Gray Nebula **10**

Frame & Edge Band Colors

Black **BK**

Dove Gray **DG**

Fixed Height Leg Colors

Black **BK**

Chrome **C**

Adjustable Leg Colors

Black **BK**

Dove Gray **DG**

36x72" 8000 Series Utility Table with Walnut Laminate Top, Chrome Legs, Black Frame and Edge Band
Model: 803672

36x72" 8000 Series Utility Table with Oak Laminate Top, Chrome Legs, Black Frame and Edge Band
Model: 803672

36x72" 8000 Series Utility Table with Mahogany Laminate Top, Chrome Legs, Dove Gray Frame and Edge Band
Model: 803672

36x72" 8000 Series Utility Table with Gray Nebula Laminate Top, Chrome Legs, Dove Gray Frame and Edge Band
Model: 803672

Model No.	Description Shape and Size	Weight
801848	18x48" Rectangle Table. Black or Dove Gray Steel Frame and Chrome legs	55
801860	18x60" Rectangle Table. Black or Dove Gray Steel Frame and Chrome Legs	70
801872	18x72" Rectangle Table. Black or Dove Gray Steel Frame and Chrome Legs	85
802040	20x40" Rectangle Table. Black or Dove Gray Steel Frame and Chrome Legs	50
802060	20x60" Rectangle Table. Black or Dove Gray Steel Frame and Chrome Legs	75
802448	24x48" Rectangle Table. Black or Dove Gray Steel Frame and Chrome Legs	70
802460	24x60" Rectangle Table. Black or Dove Gray Steel Frame and Chrome Legs	80
802472	24x72" Rectangle Table. Black or Dove Gray Steel Frame and Chrome Legs	95
803048	30x48" Rectangle Table. Black or Dove Gray Steel Frame and Chrome Legs	80
803060	30x60" Rectangle Table. Black or Dove Gray Steel Frame and Chrome Legs	85
803072	30x72" Rectangle Table. Black or Dove Gray Steel Frame and Chrome Legs	110
803672	36x72" Rectangle Table. Black or Dove Gray Steel Frame and Chrome Legs	120

Custom sizes, laminate and edge band colors are available. Contact your dealer for pricing. Minimum order quantities may apply.

40

www.alliedusa.com

www.alliedusa.com

41



30x60" T-Leg Training Table with Oak Laminate Top and Black Edge Band
Model: T53060/LP45

30x60" T-Leg Training Table with Mahogany Laminate Top and Black Edge Band
Model: T53060/LP45

Laminate Finishes



Vinyl Edge Colors



Custom sizes and laminate colors are available. Contact your dealer for pricing. Minimum order quantities may apply.



24x48" T-Leg Training Table with Graphite Nebula Laminate Top
Model: T52448/LP45



Plastic Book Box Available in Black or Platinum



2½" Swivel Casters



Wire Grommets



Back Pack Hook

T Series Pedestal Tables

Specifications

Work Surface: 45lb. density 1¼" thick particleboard with laminate backer sheet for balanced construction. Scratch and stain resistant high pressure laminate (HPL) surface. Mechanically fastened black T-mold vinyl edge banding.

Frame: Rectangular 16 gauge tubing with full width stretcher bar. Black enamel over chrome-plated lower section with adjustable nylon swivel glides.

Table Heights: Legs adjust in one inch increments using a two-point fastening system. Table height adjusts from 24 to 32" inches.

Options

Book Box: High impact plastic, available in black or platinum color. 15 x 12 x 4¾".
(Order BBPBK black or BBPPL platinum)

Locking Swivel Casters: 2½" swivel mounted locking casters replace standard glides. (Order CA60B)

Grommet: 2" plastic insert. Placement per your specifications. (Order GROMMET)

Back Pack Hook: 11 gauge top plate connected to ¼" diameter wire hook. Fully chrome plated. (Order HOOK)

Model No.	Description Shape and Size	Weight
T52448/LP45	24x48" Rectangle Table. Black Over Chrome T-Leg Pedestal	65
T52460/LP45	24x60" Rectangle Table. Black Over Chrome T-Leg Pedestal	75
T53060/LP45	30x60" Rectangle Table. Black Over Chrome T-Leg Pedestal	85
T53072/LP45	30x72" Rectangle Table. Black Over Chrome T-Leg Pedestal	100
T53672/LP45	36x72" Rectangle Table. Black Over Chrome T-Leg Pedestal	115

Table Top Shapes



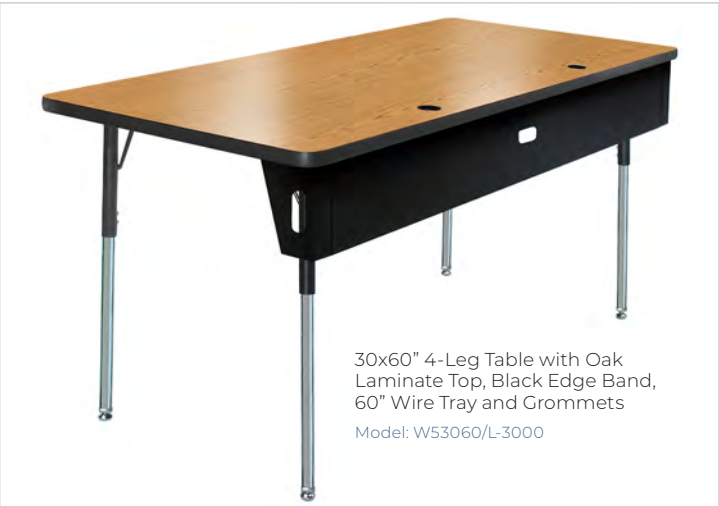


30x60" 4-Leg Table with Oak Laminate Top, Black Edge Band and Wire Tray
Model: W53060/L-3000

Laminate Finishes



Vinyl Edge Colors



30x60" 4-Leg Table with Oak Laminate Top, Black Edge Band, 60" Wire Tray and Grommets
Model: W53060/L-3000



Precision Leg Fastening System



Wire Grommet



Back Pack Hook

W Series 4-Leg Tables

Specifications

Work Surface: 45lb. density 1¼" thick particleboard with laminate backer sheet for balanced construction. Scratch and stain resistant high pressure laminate (HPL) surface. Mechanically fastened T-mold vinyl edge banding.

Frame: Rectangular 16 gauge tubing with full width stretcher bar. Black enamel over chrome-plated lower section with adjustable nylon swivel glides.

Wire Tray: 16 Gauge formed steel. 7" high panel 3 x 2" channel for wire support. Black powder coat finish.

Precision Leg Fastening System: 14 gauge factory-installed steel bracket ensures perfect placement, ease of assembly and maximum stability.

Table Heights: Legs adjust in one inch increments using a two-point fastening system.

- Standard legs adjust from 20½ to 30½" (Order ST)
- Low-Range legs adjust from 16½ to 25½" (Order LR)

Options

Grommet: 2" plastic insert. Placement per your specifications. (Order GROMMET)

Back Pack Hook: 11 gauge top plate connected to ¼" diameter wire hook. Fully chrome plated. (Order HOOK)

Model No.	Description Shape and Size	Weight
W52448/L-3000	24x48" Rectangle Computer Table. Black Over Chrome 4-Leg w/Wire Tray	63
W52460/L-3000	24x60" Rectangle Computer Table. Black Over Chrome 4-Leg w/Wire Tray	75
W53048/L-3000	30x48" Rectangle Computer Table. Black Over Chrome 4-Leg w/Wire Tray	73
W53060/L-3000	30x60" Rectangle Computer Table. Black Over Chrome 4-Leg w/Wire Tray	90
W53072/L-3000	30x72" Rectangle Computer Table. Black Over Chrome 4-Leg w/Wire Tray	107

Table Top Shapes





30x48" W-Series Pedestal Table with Walnut Laminate Top, Black Edge Band and 48" Wire Tray
Model: W53048/LP45

Laminate Finishes



Vinyl Edge Colors



Custom sizes and laminate colors are available. Contact your dealer for pricing. Minimum order quantities may apply.



30x48" W-Series Pedestal Table with Grey Nebula Laminate Top, Black Edge Band and 48" Wire Tray
Model: W53048/LP45



2 1/2" Swivel Casters



Wire Grommets

W Series Pedestal Tables

Specifications

Work Surface: 45lb. density 1 1/4" thick particleboard with laminate backer sheet for balanced construction. Scratch and stain resistant high pressure laminate (HPL) surface. Mechanically fastened black T-mold vinyl edge banding.

Frame: Rectangular 16 gauge tubing with full width stretcher bar. Black enamel over chrome-plated lower section with adjustable nylon swivel glides.

Wire Tray: 16 Gauge formed steel. 7" high panel 3 x 2" channel for wire support. Black powder coat finish.

Table Heights: Legs adjust in one inch increments using a two-point fastening system. Table height adjusts from 24 to 32 inches.

Options

Locking Swivel Casters: 2 1/2" swivel mounted locking casters replace standard glides. (Order CA60B)

Grommet: 2" plastic insert. Placement per your specifications. (Order GROMMET)

Model No.	Description Shape and Size	Weight
W52436/LP45	24x36" Rectangle Computer Table. Black Over Chrome T-Leg with Wire Tray	55
W52448/LP45	24x48" Rectangle Computer Table. Black Over Chrome T-Leg with Wire Tray	68
W52460/LP45	24x60" Rectangle Computer Table. Black Over Chrome T-Leg with Wire Tray	80
W53048/LP45	30x48" Rectangle Computer Table. Black Over Chrome T-Leg with Wire Tray	78
W53060/LP45	30x60" Rectangle Computer Table. Black Over Chrome T-Leg with Wire Tray	95
W53072/LP45	30x72" Rectangle Computer Table. Black Over Chrome T-Leg with Wire Tray	112

Table Top Shapes





The most popular, time-tested designs - with upgraded materials and structural improvements to provide greater strength and stability, and longer service life.

Laminate Finishes



Vinyl Edge Colors



42" Square & 36" Bar-Height Circle Top



30x60" Rectangle

Allied Café Tables

Features

- Integrated two-piece bolt-together column & base with welded top plate to prevent tops from twisting
- Textured, scuff resistant bases and columns for longer service life
- Welded inserts and positive-alignment notches simplify assembly - no cumbersome metal rods
- Vinyl edge available in popular colors
- X-Base design on single column tables allows more comfortable foot room vs. round disc base designs

Specifications

Base & Column: 3" round, 16 gauge steel column with 5 gauge steel X-base (single-column), or T-bases (dual-column). Columns are welded to an 11 gauge top plate for added stability.

Table Heights: 30 inch or 40 inch bar height.

High Pressure Laminate: 1 ¼" thick 45lb. density particleboard sealed with laminate backer for balanced construction. Long-life HPL surface with form fitting mechanically fastened edge banding or optional glue on edge for project orders.

Model No.	Description Shape & Size	Weight
TB3048	30x48" Rectangular Café / Lunchroom Table. 3" Steel Column & Base. Adj. Glides	80
TB3060	30x60" Rectangular Café / Lunchroom Table. 3" Steel Columns & Bases. Adj. Glides	105
TB3072	30x72" Rectangular Café / Lunchroom Table. 3" Steel Columns & Bases. Adj. Glides	120
TB3672	36x72" Rectangular Café / Lunchroom Table. 3" Steel Columns & Bases. Adj. Glides	120
TB3636	36x36" Square Café / Lunchroom Table. 3" Steel Column & Base w/Adj. Glides	70
TB4242	42x42" Square Café / Lunchroom Table. 3" Steel Column & Base w/Adj. Glides	85
TB36CR	36" Circle Café / Lunchroom Table. 3" Steel Column & Base. Adj. Glides	50
TB42CR	42" Circle Café / Lunchroom Table. 3" Steel Column & Base. Adj. Glides	65
TB48CR	48" Circle Café / Lunchroom Table. 3" Steel Column & Base. Adj. Glides	90

Table Top Shapes





42" & 30" Square Nest & Fold Café Tables with Graphite Nebula and Grey Nebula Laminate Tops and Platinum Edge Bands
Model: NFCAFE4236S
Model: NFCAFE3036S

42" Circle Nest & Fold Café Table with Oak Laminate Top and Black Edge Band
Model: NFCAFE4236R

The Allied Nest & Fold Café Tables are stylish, durable and the most efficient choice for managing space in classrooms, cafeterias, and multi-use spaces of all sizes. The innovative folding top flips up to save space, while the supporting legs nest into one another making storage more efficient. Sturdy locking casters make moving easy. When set up, the locking mechanism keeps the table rock-solid, presenting the beautiful, long lasting surface finish that makes Allied Tables the industry standard.



42" & 30" Circle Nest & Fold Café Tables with Wild Cherry and Fusion Maple Laminate Tops and Black Edge Bands
Model NFCAFE4236R
Model NFCAFE3036R

Secure folding mechanism allows tops to fold, saving space while protecting the table surface. Nesting legs and casters provide easy compact storage.

Allied Nest & Fold Café Table Collection

Features

- Smooth touch mechanism for safety and comfort
- Patented nesting base allows for easy configuration for office or schools
- Available in 29, 36 and 42 inch table heights.
- Perfect for cafeterias, multi-use rooms and event venues of any size
- Multiple nesting shape and size options
- Easy to assemble

Specifications

Work Surface: 1¼" thick 45lb. density particleboard sealed with laminate backer for balanced construction. Long-life high pressure laminate (HPL) surface with form fitting mechanically fastened T-mold edge banding or optional glue-on edge.

Base & Column: Constructed of cast aluminum with welded and bolted assembly. Attaches to 2¼" column made of 13 gauge steel.

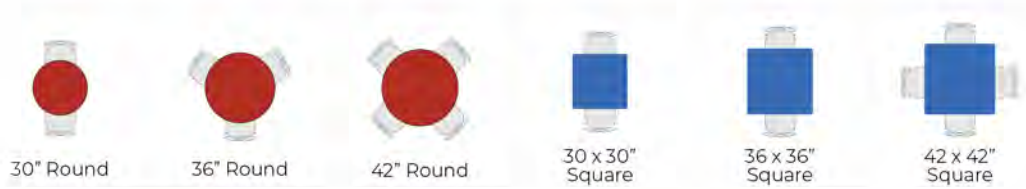
Folding Mechanism: Injection molded aluminum and steel requires (8) #12-14 screws. 11 gauge top plate connects to column.

Casters: 2" locking swivel casters.



30" Square Nest & Fold Café table with Mahogany Laminate Top and Black Edge Band
Model: NFCAFE3036S

Table Top Shapes



Laminate Finishes

Walnut **WA** Fusion Maple **FM** Light Oak **OK** Mahogany **MA** Wild Cherry **75** Nepal Teak **TK**

Vinyl Edge Colors

Black **BK** Blue **BL** Red **RD** Yellow **YL** Graphite Nebula **96** Gray Nebula **10**

Black **BK** Platinum **PL** Navy Blue **BL** Red **RD** Purple **PU**

Dynamic Blue **DB** Electric Lime **EL** Stop Red **SR** Charcoal **CH** Fusion Maple **FM**

Leg Color

Platinum **PL**

Model No.	Description Shape and Size	Weight
NFCAFE3029R	30" Round Mobile Nest & Fold Café Table. 29" Height	125
NFCAFE3036R	30" Round Mobile Nest & Fold Café Table. 36" Height	130
NFCAFE3042R	30" Round Mobile Nest & Fold Café Table. 42" Height	135
NFCAFE3629R	36" Round Mobile Nest & Fold Café Table. 29" Height	140
NFCAFE3636R	36" Round Mobile Nest & Fold Café Table. 36" Height	145
NFCAFE3642R	36" Round Mobile Nest & Fold Café Table. 42" Height	150
NFCAFE4236R	42" Round Mobile Nest & Fold Café Table. 36" Height	150
NFCAFE4242R	42" Round Mobile Nest & Fold Café Table. 42" Height	155
NFCAFE3029S	30x30" Square Mobile Nest & Fold Café Table. 29" Height	125
NFCAFE3036S	30x30" Square Mobile Nest & Fold Café Table. 36" Height	130
NFCAFE3042S	30x30" Square Mobile Nest & Fold Café Table. 42" Height	135
NFCAFE3629S	36x36" Square Mobile Nest & Fold Café Table. 29" Height	140
NFCAFE3636S	36x36" Square Mobile Nest & Fold Café Table. 36" Height	145
NFCAFE3642S	36x36" Square Mobile Nest & Fold Café Table. 42" Height	150
NFCAFE4236S	42x42" Square Mobile Nest & Fold Café Table. 36" Height	150
NFCAFE4242S	42x42" Square Mobile Nest & Fold Café Table. 42" Height	155



30" Circle Nest & Fold Café Table with Blue Laminate Top and Platinum Edge Band
Model: NFCAFE3036R



30" Circle Nest & Fold Café Table with Oak Laminate Top and Black Edge Band
Model: NFCAFE3036R



30" Square Nest & Fold Café Table with Gray Nebula Laminate Top and Black Edge Band
Model: NFCAFE3036S



30" Square Nest & Fold Café Table with Walnut Laminate Top and Black Edge Band
Model: NFCAFE3036S

For Dry Erase table tops, see page 84.

Custom sizes and laminate colors are available. Contact your dealer for pricing. Minimum order quantities may apply.



Allied CaseWorks 36x36" Base Cabinet w/ Shelves in Fusion Maple Finish
Model: ACBSC3636S

Allied's Muse Art Table with 42x72" Solid Hardwood Top
Model: AT4272HW

Table Top Shapes



Work Surface Options



Hardwood Top:
1 3/4" butcher-block style Parawood. The hard, smooth finish is similar in color and durability to maple.

HPL Top:
1 1/4" Thick, 45 lb. density particleboard, premium scratch & stain resistant laminate, with matching mechanically fastened vinyl T-mold edge banding.



Allied Muse Art Table with 42x60" Hardwood Top
Model: AT4260HW



Allied Muse Art Table with 30x60" Fusion Maple High Pressure Laminate Top
Model: AT3060FM

Allied Muse Art Tables

Features

- Eco-friendly Parawood construction
- Premium Thru-Bolt leg fastening system
- Superior stability and wobble resistance
- Choice of HPL or solid wood work surfaces
- Easy assembly with metal inserts
- Available in three work surface heights:
 - 30" Standard
 - 26" Low range (Order ATLR)
 - 34" High range (Order ATHR)

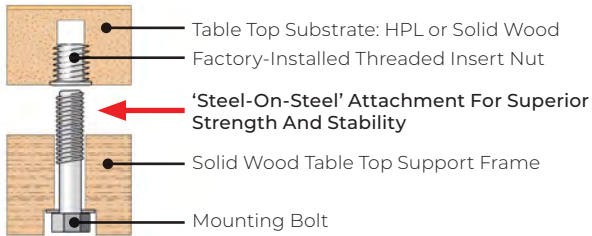
Specifications

Work Surface Options:

High Pressure Laminate (HPL) 1 1/4" thick 45 lb. density particleboard with sealed backer, metal mounting inserts and edge banding. (Order FM)

Solid 1 3/4" Parawood butcher-block style table top with bull nose edges and metal mounting inserts. (Order HM)

Frame Construction: Solid Parawood hardwood. 3/4 x 5" wide solid apron. Hardwood T-legs with leveling glides. Threaded steel insert nuts secure the top to the frame.



Model No.	Description Shape and Size	Weight
AT3060FM	30x60" Art Table. Solid Hardwood Frame with HPL Top	125
AT4260FM	42x60" Art Table. Solid Hardwood Frame with HPL Top	139
AT4272FM	42x72" Art Table. Solid Hardwood Frame with HPL Top	150
AT4260HM	42x60" Art Table. Solid Hardwood Frame with Solid Hardwood Top	164
AT4272HM	42x72" Art Table. Solid Hardwood Frame with Solid Hardwood Top	180



Allied Library Tables

Features

- Eco-friendly Parawood construction
- Premium Twin-Bolt leg fastening system
- Superior stability and wobble resistance
- Stain and scratch resistant HPL work surface
- Vinyl edge with designer maple finish

Specifications:

Work Surface: 1¼" thick 45 lb. density particleboard with sealed backer for balanced construction. Long-life high pressure laminate (HPL) surface with form fitting mechanically fastened T-mold edge banding.

Frame Construction:

- Solid hardwood, responsibly sourced.
- ¾" x 3" wide wood apron.
- Square hardwood legs with leveling glides.
- Premium Twin-bolt leg fastening system.

Optional Grommet: 2" plastic insert. Placement per your specifications. ([Order GROMMET](#))

Optional Back Pack Hook: 11 gauge top plate connected to ¼" diameter wire hook. Chrome plated. ([Order HOOK](#))

Table Top Shapes

20 x 48" Rectangle

20 x 60" Rectangle

24 x 36" Rectangle

24 x 48" Rectangle

30 x 48" Rectangle

30 x 60" Rectangle

30 x 72" Rectangle

36 x 60" Rectangle

36 x 72" Rectangle

24 x 24" Square

36" Circle

42" Circle

48" Circle

Solid Parawood Frame:
Parawood is prized for its hard, smooth finish, which is similar in color and durability to maple.

Fusion Maple HPL Top:
1¼" Thick, 45 lb. density particleboard, premium scratch & stain resistant laminate, with matching mechanically fastened vinyl T-mold edge banding.

Model No.	Description Shape & Size	Weight
LB2048	20x48" Rectangle Library Table. Solid Hardwood Aprons & Legs with HPL Top	40
LB2060	20x60" Rectangle Library Table. Solid Hardwood Aprons & Legs with HPL Top	50
LB2436	24x36" Rectangle Library Table. Solid Hardwood Aprons & Legs with HPL Top	40
LB2448	24x48" Rectangle Library Table. Solid Hardwood Aprons & Legs with HPL Top	45
LB3048	30x48" Rectangle Library Table. Solid Hardwood Aprons & Legs with HPL Top	50
LB3060	30x60" Rectangle Library Table. Solid Hardwood Aprons & Legs with HPL Top	60
LB3072	30x72" Rectangle Library Table. Solid Hardwood Aprons & Legs with HPL Top	80
LB3660	36x60" Rectangle Library Table. Solid Hardwood Aprons & Legs with HPL Top	80
LB3672	36x72" Rectangle Library Table. Solid Hardwood Aprons & Legs with HPL Top	95
LB2424	24x24" Square Library Table. Solid Hardwood Aprons & Legs w/HPL Top	35
LB36CR	36" Circle Library Table. Solid Hardwood Aprons & Legs with HPL Top	40
LB42CR	42" Circle Library Table. Solid Hardwood Aprons & Legs with HPL Top	45
LB48CR	48" Circle Library Table. Solid Hardwood Aprons & Legs with HPL Top	55

Allied Solid Hardwood Stools

Allied's solid hardwood stools are ideal for science lab tables, art classrooms and more. Constructed of solid wood, they feature a full under-seat support apron for maximum strength, making this stool incredibly strong and highly durable.

What's more, they are constructed of eco-friendly Parawood, a responsibly grown, harvested and renewed resource, with a hard smooth finish, similar in color and durability to maple.

Specifications

Solid Hardwood Legs: 1¼" x 1 ¼" solid hardwood. 1½" x ¾" Horizontal supports for stability • Edges are smoothed and fully rounded for enhanced safety.

Solid Hardwood Seats: 13 ⅞" diameter and ¾" thick. Smooth bull-nose edges for comfort. Solid wood under-seat support apron.



Allied's Solid Hardwood Stools Ship Fully Assembled

Model No.	Description Shape and Size	Weight
STL18	18" Height Solid Hardwood Stool	12
STL24	24" Height Solid Hardwood Stool	14
STL30	30" Height Solid Hardwood Stool	16



Frame Construction: Eco-friendly Parawood is a responsibly grown, harvested and renewed resource, with a hard, smooth finish, similar in color and durability to maple.

Parawood



Seat Top: 1¾" butcher-block style Parawood. The hard, smooth finish is similar in color and durability to maple.

Parawood



Allied's Solid Hardwood Mobile Science Cart with Chemsurf Top
Model: BS2436BACRTS

Solid Hardwood Construction with Chemsurf Top



4 Heavy Duty Locking Swivel Casters



Twin-Bolt Leg Fastening System

Allied Mobile Science Cart

The Allied Mobile Demo Cart gives you the freedom of mobility in todays active classrooms. Easily converts to an additional workstation by setting the brakes on the casters. The Chemsurf chemically resistant top and shelf resist damage from spills and heat, while the solid hardwood legs and frame are built for years of stability and safety.

Features

- Eco-friendly Parawood construction
- Chemically-resistant Chemsurf work surface
- Heavy duty locking swivel casters.
- Premium Twin-Bolt leg fastening system
- Superior stability and wobble resistance

Specifications:

Work Surface: 1¼" thick 45 lb. density particleboard with sealed backer for balanced construction. Chemically resistant high pressure laminate surface with form fitting mechanically fastened T-mold edge banding.

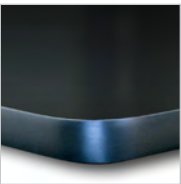
- Frame Construction:**
- Solid Parawood hardwood
 - ¾" x 5" wide solid apron
 - 2½" Square hardwood legs
 - Premium Twin-bolt leg fastening system

Model No.	Description Shape and Size	Weight
BS2436BACRTS	24x36" Hardwood Mobile Science Cart with Shelf. 31" Height.	81



Eco-friendly Parawood is a responsibly grown, harvested and renewed resource, with a hard, smooth finish, similar in color and durability to maple.

Parawood



ChemSurf: 1¼" Thick, 45 lb. density particleboard with premium high-pressure stain resistant laminate. Moderate chemical resistance.

Chemsurf



Our most popular STEM and Maker tables are proudly manufactured with Parawood, the most Eco-friendly, sustainable and renewable hardwood used in quality furniture around the world.



24x48" Hardwood Science Table
Shown with ChemSurf Laminate Top
and Low-Profile Aprons
Model: BS2448BA-LP



Premium Twin-Bolt
Fastening System



Double Book Boxes



Adjustable Leveling Glides



Optional 3" Low-Profile
Aprons (Order LP)



2 1/4" Solid Hardwood Legs

Allied STEM & Maker Table Collection

Features

- Eco-friendly Parawood construction
- Premium Twin-Bolt leg fastening system
- Superior stability and wobble resistance
- Choice of five high quality surfaces
- Customizable work surface heights

Specifications

Work Surface:

Choice of high pressure laminate (HPL) 1 1/4" thick 45 lb. density particleboard with sealed backer and T-mold edge banding, or solid table tops with superior chemical resistance in 3/4 or 1" thicknesses.

Frame Construction:

Solid hardwood, responsibly sourced.
3/4 x 5" wide solid Parawood apron.
Optional low-profile 3" apron available. (Order LP)
2 1/4" square hardwood legs with protective rubber boots.
14 gauge steel corner brackets with premium twin-bolt fastening system.
Tops and frames are factory pre-assembled.

Adjustable Leveling Glides: Ensure work surface stability.

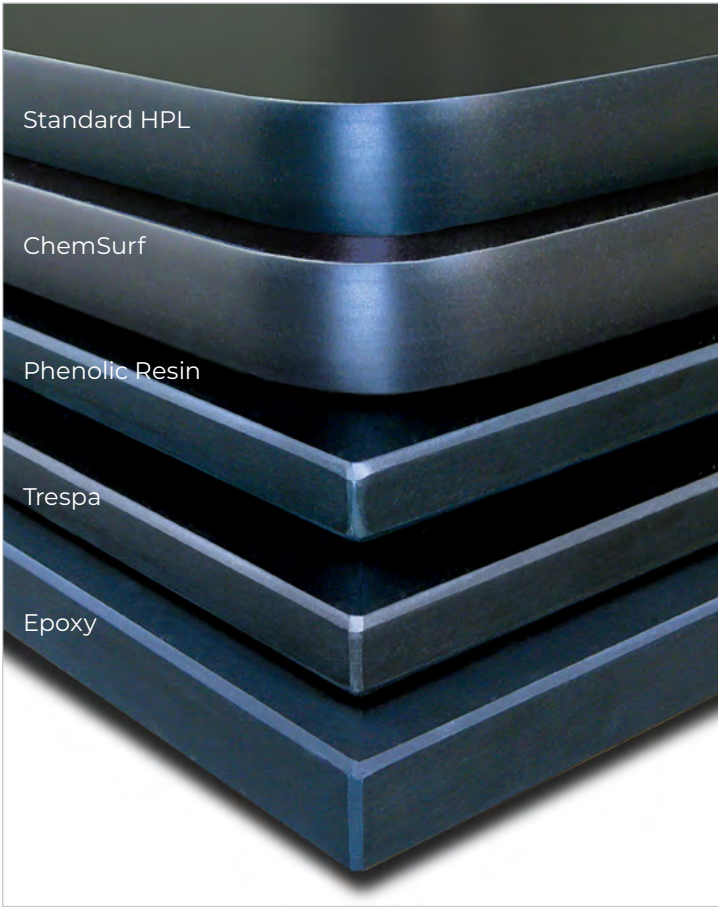
Table Heights:

30, 36 & 40 inch work surface heights.
Heights are customizable.
ADA compliant heights available.

Options

Double Book Boxes: 4 1/4" high x 16 1/2" wide x 12" deep
Impact resistant ABS plastic. Available for 5" aprons only.
Not available on 24x48" Table.
(Order STBB)

Back Pack Hook: 11 gauge top plate connected to 1/4" diameter wire hook. Fully chrome plated.
(Order HOOK)



STEM & Maker Table Surface Options

High Pressure Laminate: 1¼" thick, 45 lb. density particleboard with premium stain resistant high-pressure laminate (HPL). Non-chemical resistant. Backer sheet for balanced construction, black vinyl T-mold edges. (Order BK)

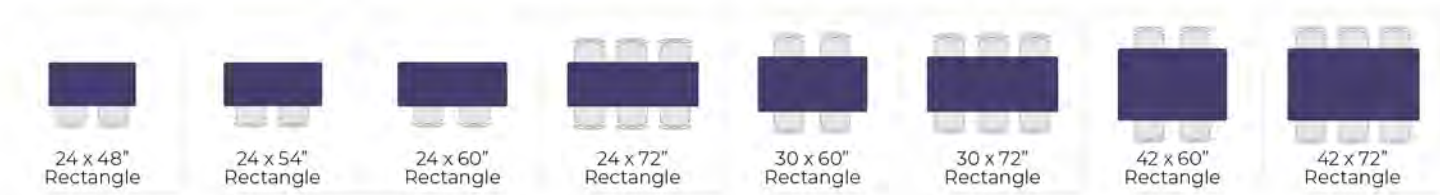
ChemSurf: 1¼" thick, 45 lb. density particleboard with premium high-pressure stain resistant laminate. Moderate chemical resistance. Backer sheet for balanced construction, black vinyl T-mold edges. (Order BA)

Phenolic: ¾" Thick solid phenolic resin. Superior chemical resistance. ⅛" Beveled edges. (Order PH)

Trespa: ¾" Thick solid Trespa phenolic resin. Superior chemical resistance. ⅛" Beveled edges. (Order TR)

Epoxy: 1" Thick solid epoxy resin. Highest level of chemical resistance. ⅛" Beveled edges with drip grooves. (Order EP)

Table Top Shapes



Frame and Leg Structure



Eco-friendly Parawood is a responsibly grown, harvested and renewed resource, with a hard, smooth finish, similar in color and durability to maple.

Model No.	Description Shape and Size	Weight
BS2448BK	24x48" Solid Hardwood Science Table with Black HPL Top	75
BS2454BK	24x54" Solid Hardwood Science Table with Black HPL Top	85
BS2460BK	24x60" Solid Hardwood Science Table with Black HPL Top	90
BS2472BK	24x72" Solid Hardwood Science Table with Black HPL Top	105
BS3060BK	30x60" Solid Hardwood Science Table with Black HPL Top	110
BS3072BK	30x72" Solid Hardwood Science Table with Black HPL Top	120
BS3660BK	36x60" Solid Hardwood Science Table with Black HPL Top	120
BS4260BK	42x60" Solid Hardwood Science Table with Black HPL Top	140
BS4272BK	42x72" Solid Hardwood Science Table with Black HPL Top	170
BS2448BA	24x48" Solid Hardwood Science Table with Black ChemSurf Top	75
BS2454BA	24x54" Solid Hardwood Science Table with Black ChemSurf Top	85
BS2460BA	24x60" Solid Hardwood Science Table with Black ChemSurf Top	90
BS2472BA	24x72" Solid Hardwood Science Table with Black ChemSurf Top	105
BS3060BA	30x60" Solid Hardwood Science Table with Black ChemSurf Top	110
BS3072BA	30x72" Solid Hardwood Science Table with Black ChemSurf Top	120
BS3660BA	36x60" Solid Hardwood Science Table with Black ChemSurf Top	120
BS4260BA	42x60" Solid Hardwood Science Table with Black ChemSurf Top	140
BS4272BA	42x72" Solid Hardwood Science Table with Black ChemSurf Top	170
BS2448PH	24x48" Solid Hardwood Science Table with Black ¾" Phenolic Top	85
BS2454PH	24x54" Solid Hardwood Science Table with Black ¾" Phenolic Top	100
BS2460PH	24x60" Solid Hardwood Science Table with Black ¾" Phenolic Top	110
BS2472PH	24x72" Solid Hardwood Science Table with Black ¾" Phenolic Top	130
BS3060PH	30x60" Solid Hardwood Science Table with Black ¾" Phenolic Top	135
BS3072PH	30x72" Solid Hardwood Science Table with Black ¾" Phenolic Top	150
BS3660PH	36x60" Solid Hardwood Science Table with Black ¾" Phenolic Top	170
BS4260PH	42x60" Solid Hardwood Science Table with Black ¾" Phenolic Top	185
BS4272PH	42x72" Solid Hardwood Science Table with Black ¾" Phenolic Top	215
BS2448EP	24x48" Solid Hardwood Science Table with Black 1" Solid Epoxy Top	140
BS2454EP	24x54" Solid Hardwood Science Table with Black 1" Solid Epoxy Top	160
BS2460EP	24x60" Solid Hardwood Science Table with Black 1" Solid Epoxy Top	170
BS2472EP	24x72" Solid Hardwood Science Table with Black 1" Solid Epoxy Top	180
BS3060EP	30x60" Solid Hardwood Science Table with Black 1" Solid Epoxy Top	185
BS3072EP	30x72" Solid Hardwood Science Table with Black 1" Solid Epoxy Top	210
BS3660EP	36x60" Solid Hardwood Science Table with Black 1" Solid Epoxy Top	235
BS4260EP	42x60" Solid Hardwood Science Table with Black 1" Solid Epoxy Top	275
BS4272EP	42x72" Solid Hardwood Science Table with Black 1" Solid Epoxy Top	345
BS2448TR	24x48" Solid Hardwood Science Table with Black ¾" Trespa Top	85
BS2454TR	24x54" Solid Hardwood Science Table with Black ¾" Trespa Top	100
BS2460TR	24x60" Solid Hardwood Science Table with Black ¾" Trespa Top	110
BS2472TR	24x72" Solid Hardwood Science Table with Black ¾" Trespa Top	130
BS3060TR	30x60" Solid Hardwood Science Table with Black ¾" Trespa Top	135
BS3072TR	30x72" Solid Hardwood Science Table with Black ¾" Trespa Top	150
BS3660TR	36x60" Solid Hardwood Science Table with Black ¾" Trespa Top	170
BS4260TR	42x60" Solid Hardwood Science Table with Black ¾" Trespa Top	185
BS4272TR	42x72" Solid Hardwood Science Table with Black ¾" Trespa Top	215



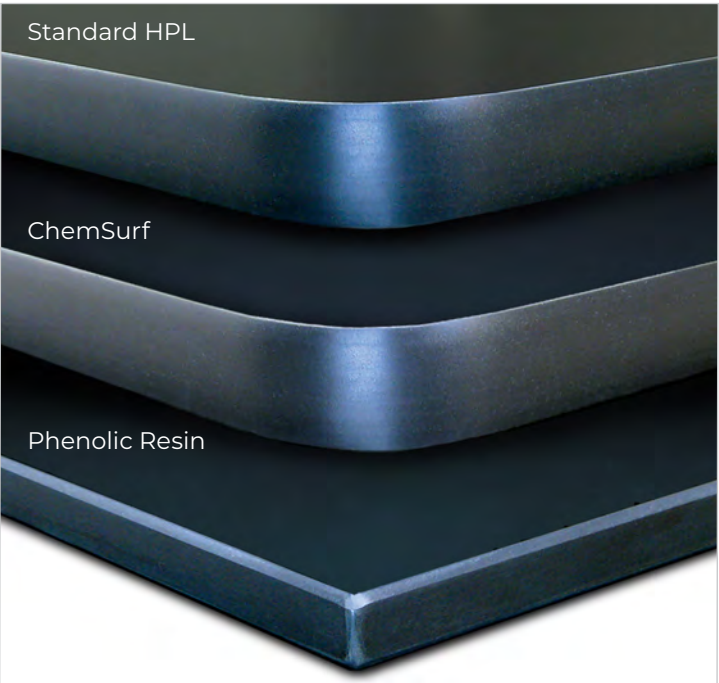
30x72" Table Shown with Chemsurf
Chemically Resistant Top with Black Edge Band.
Standard 30" Work Surface Height
Model: 803072BABBV

Optional
Adjustable-Height Legs



Legs Telescope From 24 to 36"
(Order L-80ADJBK)

The sleek, modern look of the 8000 Series steel frame science tables with the choice of standard or chemically-resistant surfaces, offers a value packed combination of form, function and affordability.



All Steel Frame



Square Tube Legs with
Adjustable Steel Glides



Reinforced Twin-Bolt Corner
Brackets

Allied Science Table Collection

Features

- All steel frame construction with enamel finish
- Eight size options
- Choice of High Pressure Laminate (HPL), ChemSurf or Phenolic Resin work surfaces
- Vinyl T-mold edge on HPL tops
- 1/8" beveled edges on solid phenolic tops
- Premium Twin-Bolt leg fastening system

Specifications

Work Surface Options:

High Pressure Laminate: 1 1/4" thick, 45 lb. density particleboard with premium stain resistant high-pressure laminate (HPL). Backer sheet for balanced construction, black vinyl T-mold edges. (Order BK)

ChemSurf: 1 1/4" thick, 45 lb. density particleboard with premium high-pressure stain resistant laminate. Moderate chemical resistance. Backer sheet for balanced construction. Black vinyl T-mold edge banding. (Order BA)

Phenolic: 3/4" Thick solid phenolic resin. Superior chemical resistance. 1/8" Beveled edges. (Order PH)

Frame Construction:

16 gauge 1 1/4" square tubular steel legs with adjustable steel glides available in black powder coat finish. 16 gauge 3 1/4" apron available in complementary black finish. 14 gauge steel corner brackets with premium twin-bolt fastening system.

Standard Table Height: Work surface height of 30".

Optional Adjustable Legs: Legs telescope from 24 to 36" in 1" increments. Twin set screws provide positive leg stability at all height settings. (Order L-80ADJBK)

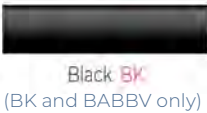
Table Top Shapes



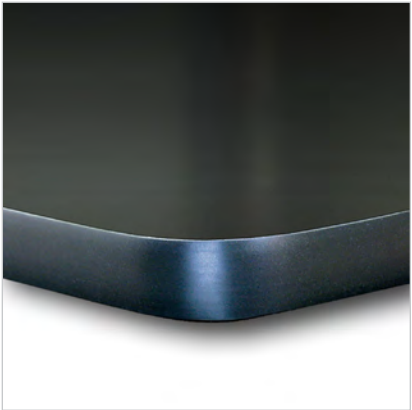
Surface Choices



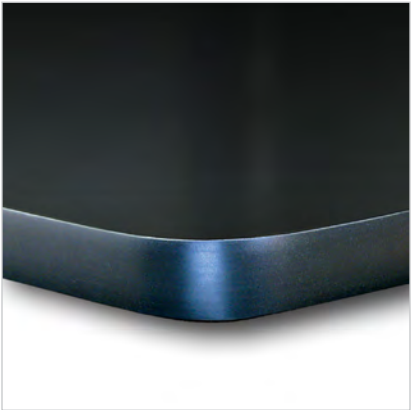
Vinyl Edge Colors



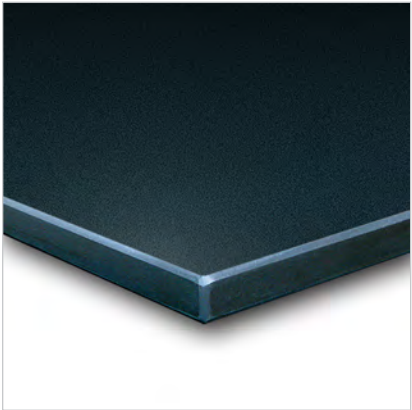
Frame & Leg Color



High Pressure Laminate:
1¼" Thick, 45 lb. density particleboard with high-pressure stain resistant laminate. Non-chemically resistant. Backer sheet for balanced construction. Black vinyl T-mold edges.
[\(Order BK\)](#)



ChemSurf Laminate:
1¼" Thick, 45 lb. density particleboard with premium high-pressure stain resistant laminate. Moderate chemical resistance. Backer sheet for balanced construction. Black vinyl T-mold edges.
[\(Order BA\)](#)



Phenolic Resin:
¾" Thick solid Phenolic resin. Phenolic tops provide a superior level of chemical resistance. ⅛" Beveled edges.
[\(Order PH\)](#)

Standard HPL Tops

Model No.	Description Shape and Size	Weight
802448BK	24x48" Rectangle Table. Black Steel Frame & Legs w/Black HPL Top	70
802454BK	24x54" Rectangle Table. Black Steel Frame & Legs w/Black HPL Top	75
802460BK	24x60" Rectangle Table. Black Steel Frame & Legs w/Black HPL Top	80
802472BK	24x72" Rectangle Table. Black Steel Frame & Legs w/Black HPL Top	95
803060BK	30x60" Rectangle Table. Black Steel Frame & Legs w/Black HPL Top	95
803072BK	30x72" Rectangle Table. Black Steel Frame & Legs w/Black HPL Top	110
804260BK	42x60" Rectangle Table. Black Steel Frame & Legs w/Black HPL Top	140
804272BK	42x72" Rectangle Table. Black Steel Frame & Legs w/Black HPL Top	160

ChemSurf HPL Tops

Model No.	Description Shape and Size	Weight
802448BABBV	24x48" Rectangle Table. Black Steel Frame & Legs w/Black ChemSurf HPL Top	70
802454BABBV	24x54" Rectangle Table. Black Steel Frame & Legs w/Black ChemSurf HPL Top	75
802460BABBV	24x60" Rectangle Table. Black Steel Frame & Legs w/Black ChemSurf HPL Top	80
802472BABBV	24x72" Rectangle Table. Black Steel Frame & Legs w/Black ChemSurf HPL Top	95
803060BABBV	30x60" Rectangle Table. Black Steel Frame & Legs w/Black ChemSurf HPL Top	95
803072BABBV	30x72" Rectangle Table. Black Steel Frame & Legs w/Black ChemSurf HPL Top	110
804260BABBV	42x60" Rectangle Table. Black Steel Frame & Legs w/Black ChemSurf HPL Top	140
804272BABBV	42x72" Rectangle Table. Black Steel Frame & Legs w/Black ChemSurf HPL Top	160

Phenolic Tops

Model No.	Description Shape and Size	Weight
802448PHBB	24x48" Rectangle Table. Black Steel Frame & Legs w/Black ¾" Phenolic Top	85
802454PHBB	24x54" Rectangle Table. Black Steel Frame & Legs w/Black ¾" Phenolic Top	90
802460PHBB	24x60" Rectangle Table. Black Steel Frame & Legs w/Black ¾" Phenolic Top	100
802472PHBB	24x72" Rectangle Table. Black Steel Frame & Legs w/Black ¾" Phenolic Top	120
803060PHBB	30x60" Rectangle Table. Black Steel Frame & Legs w/Black ¾" Phenolic Top	120
803072PHBB	30x72" Rectangle Table. Black Steel Frame & Legs w/Black ¾" Phenolic Top	140



Aero 36x72" Kidney Table with White Dry Erase Laminate Top, Black Aero Legs and Edge Band
ARO372KDE

The Allied Aero Dry Erase Activity tables are built to stand up to years of heavy everyday use. The premium ultra high-gloss Dry Erase surface makes it the perfect choice for collaborative learning and activities. Available in a variety of shapes and sizes, you are sure to find the exact table you need for any activity. The oval legs add a touch of contemporary styling with extra strength, versatility and value.

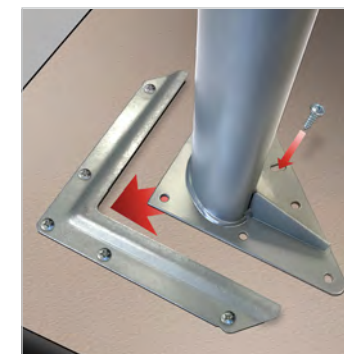


Aero 36" Circle Table with Apple Green Dry Erase Laminate Top, Platinum Aero Legs and Edge Band
ARO36CRDE



Legs Include Adjustable Nylon Swivel Glides

Optional Casters Add Approximately 2½" Height



Precision Leg Fastening System



Plastic Book Box Available In Black Or Platinum

Allied AERO Dry Erase Tables

Features

- Premium Dry Erase high gloss laminate surface
- Contemporary height-adjustable AERO leg
- Precision leg fastening system
- Twenty two size & shape combinations
- Vinyl edge available in popular colors
- Choice of leg colors

Specifications

Work Surface: 1¼" thick 45 lb. density particleboard with sealed backer for balanced construction. Premium ultra high-gloss Dry Erase laminate (HPL) surface with form fitting mechanically fastened T-mold edge banding.

Leg Construction: 11 gauge top plate welded to 16 gauge 2½ x 1½" oval tubing. Insert is 2.3 x 1.28" chrome plated 16 gauge tube. Each leg is finished with a threaded cap and adjustable nylon swivel glides or optional casters.

Precision Leg Fastening System: 14 gauge factory-installed steel bracket ensures perfect placement, ease of assembly and maximum stability.

Table Heights: Work surface height is adjustable in one inch increments using an extended point set screw.

- Standard legs adjust from 26 to 35".
- Low-Range legs adjust from 17 to 26". (Order LR)

Options

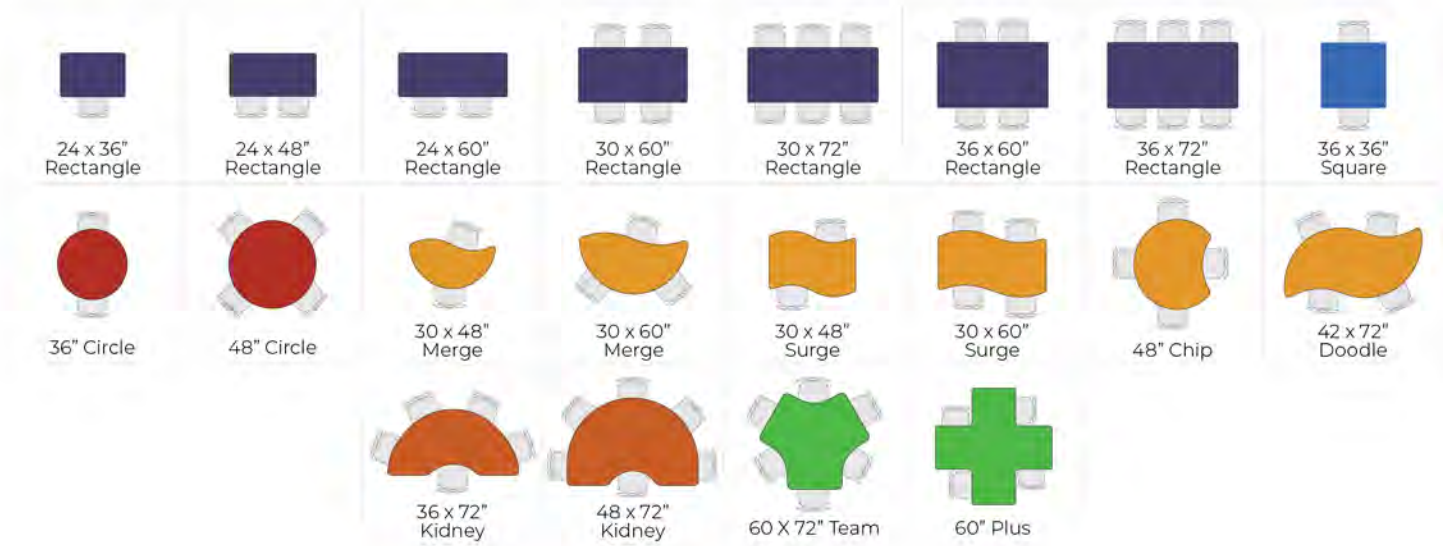
Book Box: Rigid one-piece construction. High impact plastic available in black or platinum color. 15 x 12 x 4¾". (Order BBPBK black or BBPPL platinum)

Locking Casters: 2½" swivel mounted locking casters replace standard glides. (Order CA60B)

Back Pack Hook: 11 gauge top plate connected to ¼" diameter wire hook. Fully chrome plated. (Order HOOK)



Table Top Shapes



Premium High Gloss Laminate Finishes



Model No.	Description Shape and Size	Weight
ARO2436DE	24x36" Rectangle Table with Dry Erase Top	52
ARO2448DE	24x48" Rectangle Table with Dry Erase Top	60
ARO2460DE	24x60" Rectangle Table with Dry Erase Top	85
ARO3060DE	30x60" Rectangle Table with Dry Erase Top	91
ARO3072DE	30x72" Rectangle Table with Dry Erase Top	105
ARO3660DE	36x60" Rectangle Table with Dry Erase Top	102
ARO3672DE	36x72" Rectangle Table with Dry Erase Top	117
ARO3636DE	36x36" Square Table with Dry Erase Top	71
ARO36CRDE	36" Circle Table with Dry Erase Top	63
ARO48CRDE	48" Circle Table with Dry Erase Top	90
ARO48CPDE	48" Chip Table with Dry Erase Top	88
ARO4272DDDE	42x72" Doodle Table with Dry Erase Top	105
ARO372KDE	36x72" Kidney Table with Dry Erase Top	108
ARO472KDE	48x72" Kidney Table with Dry Erase Top	113
ARO3048MGDE	30x48" Merge Table with Dry Erase Top	71
ARO3060MGDE	30x60" Merge Table with Dry Erase Top	81
ARO60PSDE	60x60" Plus Table with Dry Erase Top	106
ARO3048SGDE	30x48" Surge Table with Dry Erase Top	80
ARO3060SGDE	30x60" Surge Table with Dry Erase Top	90
ARO6072TMDE	60x72" Team Table with Dry Erase Top	160



For standard HPL table tops, see page 14.

Custom sizes and laminate colors are available. Contact your dealer for pricing. Minimum order quantities may apply.



The Allied Velocity Dry Erase Activity tables are built to stand up to years of heavy everyday use. The premium ultra high-gloss Dry Erase surface of the Velocity Series makes it the perfect choice for collaborative learning and activities. Available in a variety of shapes and sizes, you are sure to find the exact table you need for any activity.



49x64" Velocity Sweep Table
Shown with Ice Gray Erase
Laminate Top and Dynamic
Blue Legs & Edge Band

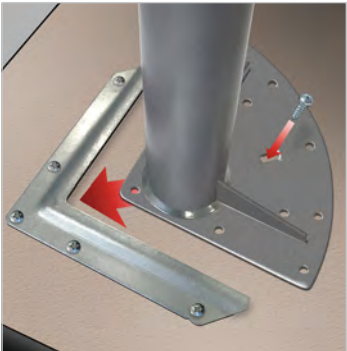
Model: VELSWEEP-LG



Legs Available In Five Coordinated Colors



Optional 3" Casters Available
in Matching Colors



Precision Leg Fastening
System

Allied Velocity Collection Tables

Features

- Premium Dry Erase high gloss laminate surface
- Modern height-adjustable Velocity leg
- Environmentally friendly powder coat upper & lower leg assembly
- Precision leg fastening system
- Multiple size & shape combinations
- Vinyl edge available in popular colors
- Choice of leg colors:

Specifications

Work Surface: 1¼" thick 45 lb. density particleboard with sealed backer for balanced construction. Long-life high pressure laminate surface with form fitting mechanically fastened edge banding.

Leg Construction: 11 gauge top plate welded to 14 gauge tubing. Leg upper consists of powder coated 2" round tubing. Insert is 1.8" powder coated 16 gauge tubing. Each leg is finished with a molded insert that accepts the included nylon glides or optional casters.

Precision Leg Fastening System: 14 gauge factory-installed steel bracket ensures perfect placement, ease of assembly and maximum stability.

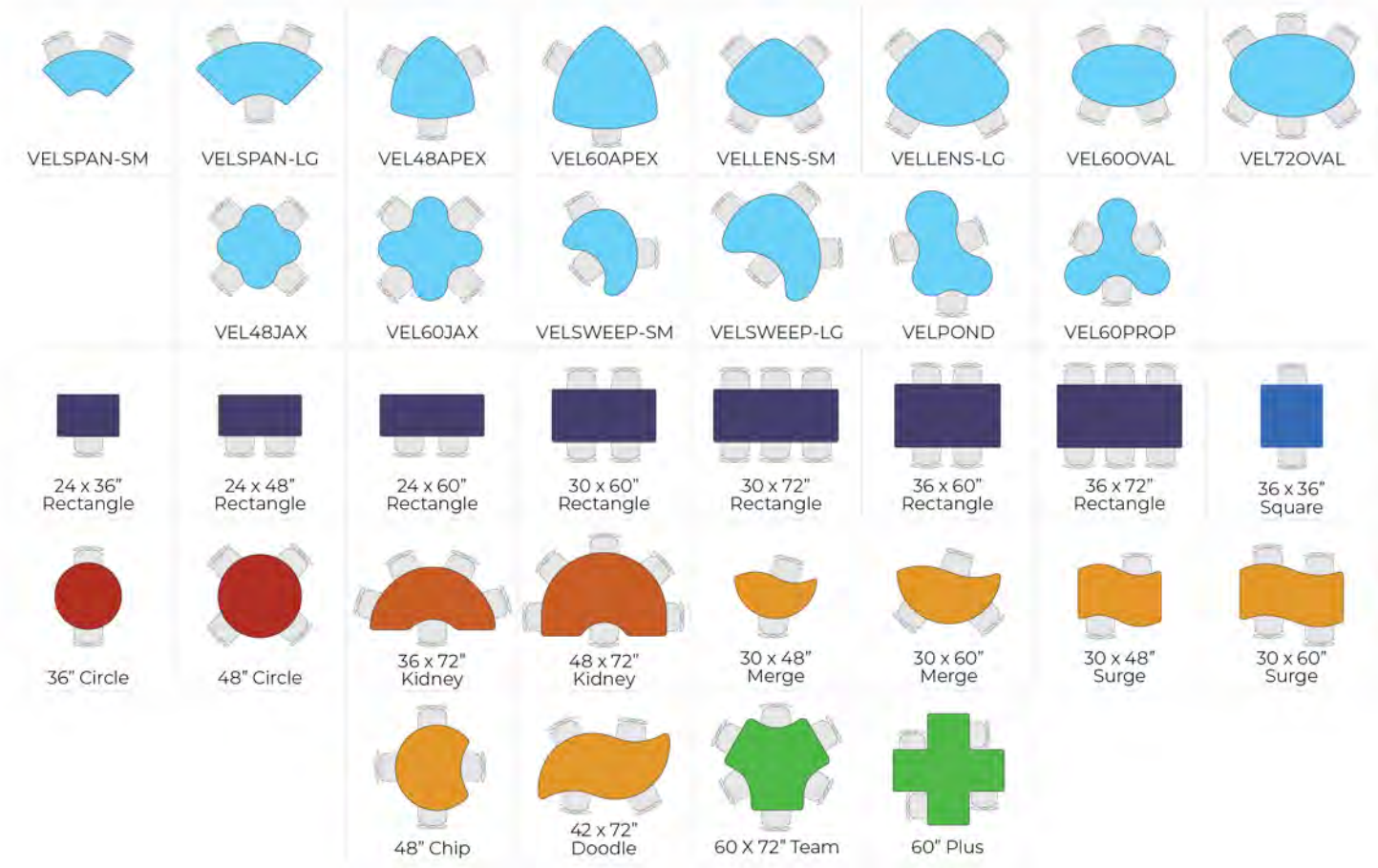
Table Heights: Work surface height is adjustable in one inch increments using an extended point set screw. Legs adjust from 24 to 37 inches. With optional 3" casters, legs adjust from 27 to 40 inches.

Options

Locking Casters: 3" swivel mounted locking casters replace standard glides. (Order CA75B)



Table Top Shapes



Premium High Gloss Laminate Finishes



Model No.	Description Shape and Size	Weight
VEL48APEXDE	48x48" Apex Table with Dry Erase Top. Velocity Adj. Legs.	110
VEL60APEXDE	60x60" Apex Table with Dry Erase Top. Velocity Adj. Legs.	120
VEL48JAXDE	48x48" Jax Table with Dry Erase Top. Velocity Adj. Legs.	115
VEL60JAXDE	60x60" Jax Table with Dry Erase Top. Velocity Adj. Legs.	125
VELLENS-SMDE	47x56" Lens Table with Dry Erase Top. Velocity Adj. Legs.	110
VELLENS- LGDE	57x71" Lens Table with Dry Erase Top. Velocity Adj. Legs.	120
VELPONDDE	46x60" Pond Table with Dry Erase Top. Velocity Adj. Legs.	120
VEL60PROPDE	60" Prop Table with Dry Erase Top. Velocity Adj. Legs.	120
VELSPAN-SMDE	24x51" Span Table with Dry Erase Top. Velocity Adj. Legs.	110
VELSPAN-LGDE	30x70" Span Table with Dry Erase Top. Velocity Adj. Legs.	135
VELSWEEP-SMDE	37x48" Sweep Table with Dry Erase Top. Velocity Adj. Legs.	120
VELSWEEP-LGDE	49x64" Sweep Table with Dry Erase Top. Velocity Adj. Legs.	110
VEL60OVALDE	36x60" Oval Table with Dry Erase Top. Velocity Adj. Legs.	105
VEL72OVALDE	48x72" Oval Table with Dry Erase Top. Velocity Adj. Legs.	130
VEL2436DEDE	24x36" Rectangular Table with Dry Erase Top. Velocity Adj. Legs.	60
VEL2448DE	24x48" Rectangular Table with Dry Erase Top. Velocity Adj. Legs.	65
VEL2460DE	24x60" Rectangular Table with Dry Erase Top. Velocity Adj. Legs.	85
VEL3060DE	30x60" Rectangular Table with Dry Erase Top. Velocity Adj. Legs.	90
VEL3072DE	30x72" Rectangular Table with Dry Erase Top. Velocity Adj. Legs.	120
VEL3660DE	36x60" Rectangular Table with Dry Erase Top. Velocity Adj. Legs.	105
VEL3672DE	36x72" Rectangular Table with Dry Erase Top. Velocity Adj. Legs.	130
VEL3636DE	36x36" Square Table with Dry Erase Top. Velocity Adj. Legs.	75
VEL36CRDE	36" Circle Table with Dry Erase Top. Velocity Adj. Legs.	67
VEL48CRDE	48" Circle Table with Dry Erase Top. Velocity Adj. Legs.	95
VEL48CPDE	48" Chip Table with Dry Erase Top. Velocity Adj. Legs.	93
VEL4272DDDE	42x72" Doodle Table with Dry Erase Top. Velocity Adj. Legs.	110
VEL372KDE	36x72" Kidney Table with Dry Erase Top. Velocity Adj. Legs.	120
VEL472KDE	48x72" Kidney Table with Dry Erase Top. Velocity Adj. Legs.	120
VEL3048MGDE	30x48" Merge Table with Dry Erase Top. Velocity Adj. Legs.	76
VEL3060MGDE	30x60" Merge Table with Dry Erase Top. Velocity Adj. Legs.	86
VEL60PSDE	60x60" Plus Table with Dry Erase Top. Velocity Adj. Legs.	111
VEL3048SGDE	30x48" Surge Table with Dry Erase Top. Velocity Adj. Legs.	85
VEL3060SGDE	30x60" Surge Table with Dry Erase Top. Velocity Adj. Legs.	95
VEL6072TMDE	60x72" Team Table with Dry Erase Top. Velocity Adj. Legs.	165

For standard HPL table tops, see page 18.

Custom sizes and laminate colors are available. Contact your dealer for pricing. Minimum order quantities may apply.



Classic Multi-Purpose Tables
Shown in a Variety of Dry Erase
Laminates and Edge Band Colors

The Allied Classic Dry Erase tables have become the “Gold Standard” in the industry. Superior materials and workmanship, combined with a premium ultra high-gloss Dry Erase laminate surface provide maximum versatility that will look great and last for years. These tables are designed to exceed your highest expectations for durability. Ideal in classrooms, meeting rooms and community rooms.

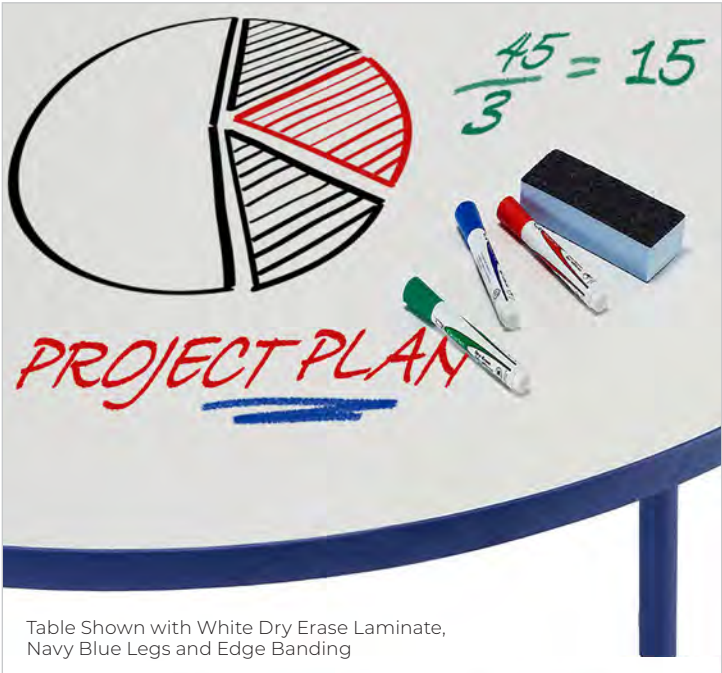


Table Shown with White Dry Erase Laminate,
Navy Blue Legs and Edge Banding



Legs Available In Six Coordinated Colors



Precision Leg Fastening
System



Plastic Book Box Available In
Black Or Platinum

Allied Classic Dry Erase Tables

Features

- Premium Dry Erase high gloss, high pressure laminate surface
- All steel adjustable legs with nylon swivel glides
- Precision leg fastening system
- Fourteen size & shape combinations
- Vinyl edge available in popular colors
- Choice of leg colors

Specifications

Work Surface: 1¼" thick 45 lb. density particleboard with sealed backer for balanced construction. Premium ultra high-gloss Dry Erase laminate (HPL) surface with form fitting mechanically fastened T-mold edge banding.

Leg Construction: Heavy duty tubular steel. Classic Series standard legs adjust in one inch increments using a two-point fastening system and are finished with a steel cap and nylon swivel glide. Classic Collection not available with casters.

Precision Leg Fastening System: 14 gauge factory-installed steel bracket ensures perfect placement, ease of assembly and maximum stability.

Table Heights: Three leg style options allow maximum flexibility of the work surface height.

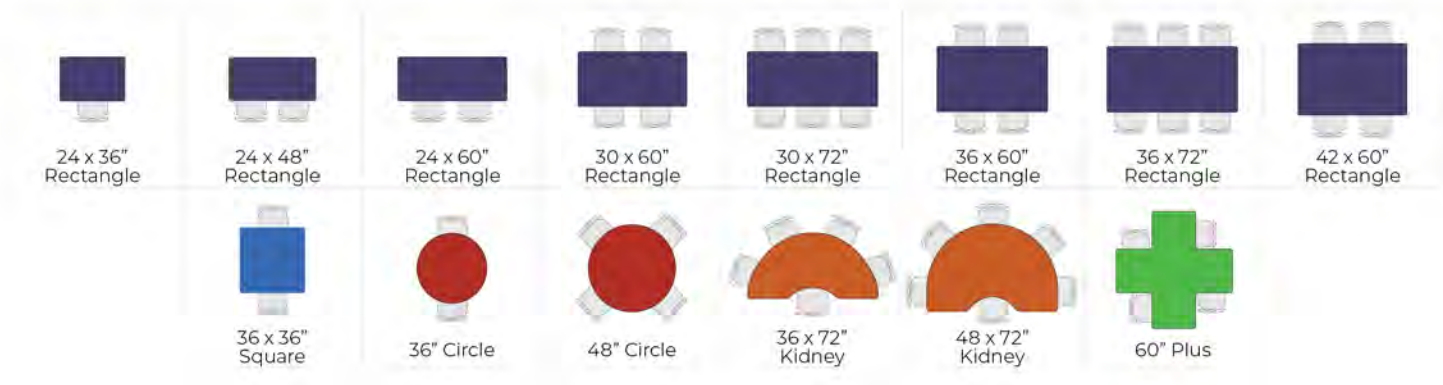
- Standard legs adjust from 20½ to 30½"
- Low-Range legs adjust from 16½ to 25½" ([Order LR](#))
- High-range legs adjust from 27½ to 36½" ([Order HR](#))

Options

Book Box: Rigid one-piece construction. High impact plastic available in black or platinum color. 15 x 12 x 4¾". ([Order BBPBK black or BBPPL platinum](#))



Table Top Shapes



Premium High Gloss Laminate Finishes



Model No.	Description Shape and Size	Weight
CLS2436DE	24x36" Rectangle Table with Dry Erase Top	45
CLS2448DE	24x48" Rectangle Table with Dry Erase Top	55
CLS2460DE	24x60" Rectangle Table with Dry Erase Top	65
CLS3060DE	30x60" Rectangle Table with Dry Erase Top	80
CLS3072DE	30x72" Rectangle Table with Dry Erase Top	95
CLS3660DE	36x60" Rectangle Table with Dry Erase Top	95
CLS3672DE	36x72" Rectangle Table with Dry Erase Top	110
CLS4260DE	42x60" Rectangle Table with Dry Erase Top	100
CLS3636DE	36x36" Square Table with Dry Erase Top	60
CLS36CRDE	36" Circle Table with Dry Erase Top	45
CLS48CRDE	48" Circle Table with Dry Erase Top	80
CLS372KDE	36x72" Kidney Table with Dry Erase Top	110
CLS472KDE	48x72" Kidney Table with Dry Erase Top	115
CLS60PSDE	60x60" Plus Table with Dry Erase Top	96



For standard HPL table tops, see page 26.

Custom sizes and laminate colors are available. Contact your dealer for pricing. Minimum order quantities may apply.



The ultimate table for industrial strength and maximum workspace versatility. Precision laser-cut steel framework and large work surfaces make this table ideal for the most demanding laboratory, mechanical and shop applications. Premium high-gloss Dry Erase laminate tops provide a durable, easy to clean surface that facilitates creative ideation.

36x72" Table Shown with White Dry Erase Top at 36" Work Surface Height and Dynamic Blue Powder-Coat Legs
Model: AI367236DE

Allied Innovation Dry Erase Maker Tables

Features

- Modern industrial multi-purpose Maker Table
- Premium Dry Erase high gloss laminate surface
- Vinyl edge available in popular colors
- Dual-Lock casters allows table to be fixed or mobile
- Laser cut frame system made in USA to exacting standards
- Choice of powder-coat frame colors

Specifications

Structural Frame: 2" square, 14 gauge cold rolled steel with continuous laser cut tube fabrication. 14 gauge top plate for secure fastening of work surface. U-channel cross support of formed 16 gauge steel maintains lateral integrity of the table.

Table Heights: 30", 36", 40" or custom.

Casters: 3" dual-lock non-marring casters.

Work Surface: 1 1/4" thick 45 lb. density particleboard with sealed backer for balanced construction. Premium ultra high-gloss Dry Erase laminate (HPL) surface with form fitting mechanically fastened T-mold edge band or optional glue-on edge.

Frame Colors: Powder-coat finish in Stop Red, Electric Lime, Dynamic Blue, Platinum or custom.

Options: Also available with Standard High Pressure laminate, Hardwood or Solid Phenolic Table Tops (see page 23).



All Steel Frame. Precision Laser Cut and Welded



Choice of Frame, Edge and Dry Erase Laminate Colors



Three Table Heights or Custom Height

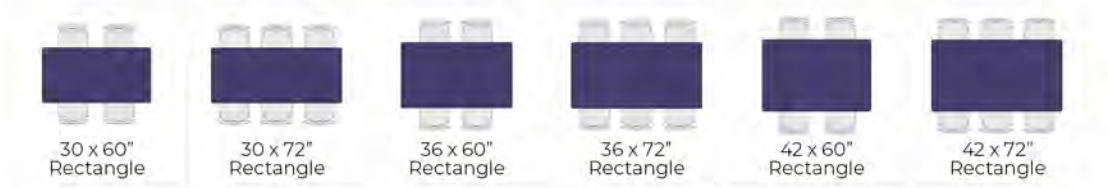


Dual-Lock Non-Marring Casters





Table Top Shapes



Premium High Gloss Laminate Finishes



36x60" Innovation Table with Ice Gray Dry Erase Laminate Top, Stop Red Powder-Coat Frame and Black Edge
Model: AI366036DE



36x60" Innovation Table with Sky Blue Dry Erase Laminate Top, Dynamic Blue Edge and Powder-Coat Frame
Model: AI366036DE



36x60" Innovation Table with Apple Green Dry Erase Laminate Top, Platinum Powder-Coat Frame and Platinum Edge
Model: AI366036DE



36x60" Innovation Table with Ice Gray Dry Erase Laminate Top, Electric Lime Powder-Coat Frame and Charcoal Edge
Model: AI3660DE

Model No.	Description Shape and Size	Weight
AI366030DE	36x60" Steel Frame Dry Erase Innovation Table w/Casters. 30" Table Height	155
AI367230DE	36x72" Steel Frame Dry Erase Innovation Table w/Casters. 30" Table Height	165
AI426030DE	42x60" Steel Frame Dry Erase Innovation Table w/Casters. 30" Table Height	167
AI427230DE	42x72" Steel Frame Dry Erase Innovation Table w/Casters. 30" Table Height	180
AI366036DE	36x60" Steel Frame Dry Erase Innovation Table w/Casters. 36" Table Height	158
AI367236DE	36x72" Steel Frame Dry Erase Innovation Table w/Casters. 36" Table Height	168
AI426036DE	42x60" Steel Frame Dry Erase Innovation Table w/Casters. 36" Table Height	170
AI427236DE	42x72" Steel Frame Dry Erase Innovation Table w/Casters. 36" Table Height	183
AI366040DE	36x60" Steel Frame Dry Erase Innovation Table w/Casters. 40" Table Height	161
AI367240DE	36x72" Steel Frame Dry Erase Innovation Table w/Casters. 40" Table Height	171
AI426040DE	42x60" Steel Frame Dry Erase Innovation Table w/Casters. 40" Table Height	173
AI427240DE	42x72" Steel Frame Dry Erase Innovation Table w/Casters. 40" Table Height	183

For standard HPL table tops, see page 32.

Custom sizes and laminate colors are available. Contact your dealer for pricing. Minimum order quantities may apply.

Nest & Fold Café Tables



42" & 30" Square Nest & Fold Café Tables
with Chrome Yellow and Ice Gray Dry Erase
Laminate Tops and Black Edge Bands
Model: NFCAFE4236SDE
Model: NFCAFE3036SDE



42" Nest & Fold Table Shown
with Apple Green Dry Erase
Laminate, Platinum Pedestal
and Black Edge Band
Model: NFCAFE4236RDE

The Allied Dry Erase Nest & Fold Café Tables are stylish, durable and the most efficient choice for managing space in classrooms, cafeterias and multi-purpose spaces of all sizes. Combined with a premium ultra high-gloss Dry Erase laminate surface, these tables provide maximum versatility that looks great and lasts for years. The innovative folding top flips up to save space, while the supporting legs nest into one another making storage more efficient. Sturdy locking casters make moving and storage easy.

Dry Erase Café Tables

Allied Dry Erase Nest & Fold Café Tables

Features

- Premium Dry Erase high gloss laminate surface
- Smooth touch mechanism for safety and comfort
- Patented nesting base allows for easy configuration for office or schools
- Available in 29", 36" and 42" table heights.
- Perfect for cafeterias, multi-use rooms and event venues of any size
- Multiple nesting shapes and sizes
- Easy to assemble

Specifications

Work Surface: 1¼" thick 45 lb. density particleboard with sealed backer for balanced construction. Premium ultra high-gloss Dry Erase laminate (HPL) surface with form fitting mechanically fastened T-mold edge band or optional glue-on edge.

Base & Column: Constructed of cast aluminum with welded and bolted assembly. Attaches to 2¼" column made of 13 gauge steel.

Folding Mechanism: Injection molded aluminum and steel requires (8) #12-14 screws. 11 gauge top plate connects to column.

Casters: 2" locking swivel casters.



42" & 30" Circle Nest & Fold Café
Tables Shown with Sky Blue and
Apple Green Dry Erase Laminate
Tops and Platinum Edge Bands
Model NFCAFE4236RDE
Model NFCAFE3036RDE

Secure folding mechanism allows tops to fold, saving space while protecting the table surface. Nesting legs and casters provide easy compact storage.



30" Square Nest & Fold Café table with White Dry Erase
Laminate Top and Black Edge Band
Model: NFCAFE3036SDE

Nest & Fold Café Tables

Dry Erase Café Tables



Table Top Shapes



Premium High Gloss Laminate Finishes



30" Round Nest & Fold Table with Sky Blue Dry Erase Laminate Top and Black Edge Band
Model: NFCAFE3036RDE



30" Round Nest & Fold Table with Chrome Yellow Dry Erase Laminate Top and Black Edge Band
Model: NFCAFE3036RDE



30" Square Nest & Fold Table with Ice Gray Dry Erase Laminate Top and Platinum Edge Band
Model: NFCAFE3036SDE



30" Square Nest & Fold Table with Apple Green Dry Erase Laminate Top and Platinum Edge Band
Model: NFCAFE3036SDE

Model No.	Description Shape and Size	Weight
NFCAFE2930RDE	30" Round Mobile Nest & Fold Café Table 29" Height with Dry Erase Top	125
NFCAFE3630RDE	30" Round Mobile Nest & Fold Café Table 36" Height with Dry Erase Top	130
NFCAFE4230RDE	30" Round Mobile Nest & Fold Café Table 42" Height with Dry Erase Top	135
NFCAFE2936RDE	36" Round Mobile Nest & Fold Café Table 29" Height with Dry Erase Top	140
NFCAFE3636RDE	36" Round Mobile Nest & Fold Café Table 36" Height with Dry Erase Top	145
NFCAFE4236RDE	36" Round Mobile Nest & Fold Café Table 42" Height with Dry Erase Top	150
NFCAFE3642RDE	42" Round Mobile Nest & Fold Café Table 36" Height with Dry Erase Top	150
NFCAFE4242RDE	42" Round Mobile Nest & Fold Café Table 42" Height with Dry Erase Top	155
NFCAFE2930SDE	30x30" Square Mobile Nest & Fold Café Table 29" Height with Dry Erase Top	125
NFCAFE3630SDE	30x30" Square Mobile Nest & Fold Café Table 36" Height with Dry Erase Top	130
NFCAFE4230SDE	30x30" Square Mobile Nest & Fold Café Table 42" Height with Dry Erase Top	135
NFCAFE2936SDE	36x36" Square Mobile Nest & Fold Café Table 29" Height with Dry Erase Top	140
NFCAFE3636SDE	36x36" Square Mobile Nest & Fold Café Table 36" Height with Dry Erase Top	145
NFCAFE4236SDE	36x36" Square Mobile Nest & Fold Café Table 42" Height with Dry Erase Top	150
NFCAFE3642SDE	42x42" Square Mobile Nest & Fold Café Table 36" Height with Dry Erase Top	150
NFCAFE4242SDE	42x42" Square Mobile Nest & Fold Café Table 42" Height with Dry Erase Top	155

For standard HPL table tops, see page 50.

Custom sizes and laminate colors are available. Contact your dealer for pricing. Minimum order quantities may apply.



Allied Mobile Dry Erase Station

Features

- Mobile, dual-sided presentation easel with interior storage
- Allied 'SwitchBack' interchangeable surface system
- Large enough to use as a partition
- Easy to roll and lock in place
- Quick assembly framing system

Specifications

Writing Surface: Generous 36" wide by 72" tall surface area. 3/4" Thick particleboard sealed with premium high-gloss dry-erase surfaces on both sides. Two presentation panels, each with two usable surfaces. 2mm PVC edge profile seals boards for easy cleaning. Panels secure to frame with rear-mounted fasteners for user friendly replacement.

Board Color: Premium ultra high gloss white. Custom colors are available based on order size.

Frame: Quick assembly frame system is made of 18-gauge U-channel steel A-frame structure with 16-gauge support channels for easy panel switching.

Shelves: Three interior surface areas for storage. Each surface is formed from 18-gauge powder coated steel.

Casters: Non-mar locking casters allow for ease of movement on carpet and tile.

Frame Colors: Powder-coat finish in Stop Red, Dynamic Blue, Electric Lime or Platinum.



Model No.	Description Shape and Size	Weight
ME-STATION	36x76" Mobile Dual-Sided White Board Multimedia Easel with Three Shelves	175



Superior design and precision construction make the Allied Mobile Metal Storage System the ideal choice. Easily re-configurable to fit any storage need, from office space to educational environments. Allied Hutch Mobile Metal Storage combines exceptional durability, easy mobility and contemporary styling.



Allied Mobile Storage Collection

Features

- Premium mobile metal storage
- Three practical height options
- Three colorful accent panels (2 sides plus top)
- Optional dry erase marker board back panels.
- Available with doors or add doors at a later date
- Hidden lock mechanism prevents tampering
- Available in Shelved, Tote or Cubbie configurations
- Shelved units can be converted to tote storage with optional kit.

Specifications

Cabinet Materials: Powder-coated U-channel and formed side and top panels made of 18 gauge steel provide the rigid base structure. Internal 20 gauge steel supports hold shelves and totes. Shelves are 20 gauge powder coated steel. Center channel reinforcements prevent deflection from larger loads. All cabinet bases measure 36 x 22".

Casters: 4" non-marring, front locking casters allow for ease of movement on carpet and tile.

Optional Doors: Two-point locking mechanism uses both the top and bottom shelves to engage metal security slides. Recessed door handles prevent snagging and keep the front flush when stored. Fully articulating hinges ensure smooth and confident closing of doors. Reinforced door perimeter minimizes rattle when opening, closing or rolling.

Optional Accessory Back Panel: Laser cut punch outs on the back allow for future addition of accessories, including write-on laminate panels.

Frame, Door & Back Panel Color:  Platinum PL

Top and Side Accent Panel Colors:  Stop Red SR  Dynamic Blue DB  Electric Lime EL



Model No.	Description Shape and Size	Weight
MMS60S	60" Tall Mobile Metal Storage Cabinet w/ Shelves	175
MMS45S	45" Tall Mobile Metal Storage Cabinet w/ Shelves	165
MMS30S	30" Tall Mobile Metal Storage Cabinet w/ Shelves	155
MMS60SD	60" Tall Mobile Metal Storage Cabinet w/ Shelves & Doors	195
MMS45SD	45" Tall Mobile Metal Storage Cabinet w/ Shelves & Doors	185
MMS30SD	30" Tall Mobile Metal Storage Cabinet w/ Shelves & Doors	175
MMS60C	60" Tall Mobile Metal Storage Cabinet w/ Cubbies	195
MMS45C	45" Tall Mobile Metal Storage Cabinet w/ Cubbies	175
MMS30C	30" Tall Mobile Metal Storage Cabinet w/ Cubbies	165
MMS60T	60" Tall Mobile Metal Storage Cabinet w/ Totes	195
MMS45T	45" Tall Mobile Metal Storage Cabinet w/ Totes	175
MMS30T	30" Tall Mobile Metal Storage Cabinet w/ Totes	165
MMS60TD	60" Tall Mobile Metal Storage Cabinet w/ Totes & Doors	205
MMS45TD	45" Tall Mobile Metal Storage Cabinet w/ Totes & Doors	195
MMS30TD	30" Tall Mobile Metal Storage Cabinet w/ Totes & Doors	185
MMSMBA	Mobile Metal Storage Laminate Marker Board Accessory	35

All cabinet bases measure 36 x 22"



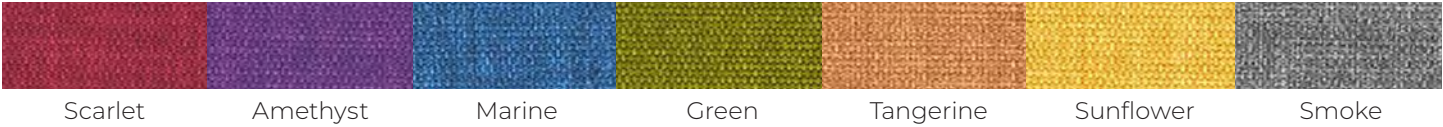
45" Model With Shelves & Doors
Model: MMS45SD



45" Model With Cubbies
Model: MMS45C



45" Model With Totes & Doors
Model: MMS45TD



Allied Boody Active Soft Seating

Features

- Active controlled movement for use on all surfaces
- Durable 300,000 double rub fabric
- Stain resistant and washable vinyl face fabric without the vinyl look or shine
- Plastic Nylon core structure
- TPU base pad

Specifications

Material: Upper upholstery is flame retardant free and phthalate-free washable vinyl with polyester back. Stain resistant and washable surface provides up to 300,000 double rubs for years of use. Contrasting lower material creates a visual accent that also resists foot marks.

Frame System: Plastic Nylon structural core provides years of use without deformation due to moisture. Unique design provides strength with a reduction in weight for easy positioning of the stool.



Base: Replaceable thermoplastic polyurethane coupled to plastic nylon core provides controlled 360 degree movement with ergonomic angle control of 12 degrees.

Size: With a seating position at approximately 18½" high, it comes with a generous 16½" round seating area and stable 18" wide base.

Contemporary Colors: Scarlet, Amethyst, Marine, Green, Tangerine, Sunflower & Smoke.

Model No.	Description Shape and Size	Weight
BDYAMETHYST	Boody Active Soft Seating Stool - Amethyst	15
BDYGREEN	Boody Active Soft Seating Stool - Green	15
BDYMARINE	Boody Active Soft Seating Stool - Marine	15
BDYSCARLET	Boody Active Soft Seating Stool - Scarlet	15
BDYSMOKE	Boody Active Soft Seating Stool - Smoke	15
BDYSUNFLOWER	Boody Active Soft Seating Stool - Sunflower	15
BDYTANGERINE	Boody Active Soft Seating Stool - Tangerine	15

Allied's Commitment to Environmental Responsibility

Allied is committed to best practices in complete eco-friendly manufacturing. From energy efficient production, to sustainably sourced materials, environmental safety and waste reduction, Allied is committed to ecologically sound practices today, for a better tomorrow.

Environmentally friendly Parawood
- A global model of renewable resources.

The Parawood story:
Rubber plantations have existed for hundreds of years in tropical countries. These plantations have been used mainly for the production of latex. After the economic life of the rubber tree, which is generally 30 years, the latex yields become extremely low and the planters fell the rubber trees and plant new ones.

- Parawood has very little tendency to warp or crack
- Parawood is eco-friendly!

Parawood is often the most misunderstood species of wood in the furniture industry. The name rubber wood invokes a variety of misconceptions as to its features and its durability. Parawood is the standard common name for the timber Hevea Brasiliensis.

In fact, Parawood is one of the more durable lumbers used in the manufacturing of today's home, office and educational furnishings. As a member of the Maple family, rubber wood has a dense grain character that is easily controlled in the kiln drying process. Parawood has very little shrinkage, making it one of the most stable construction materials available for furniture

manufacturing.

Like Maple, Parawood is a sap-producing species. In the case of maple, the sap is processed for syrup. In the case of rubber trees, it is processed for latex. Parawood plantations produce all of the latex used in the world for all rubber based products.

There is one more important feature of Parawood that is very important in today's world. Parawood is the most ecologically 'friendly' lumber used in today's furniture industry. The economic life of the rubber tree is generally 25-30 years, after which the latex yield becomes low and planters replace the tree with a new one. Unlike other woods that are cut for the sole purpose of producing furniture, Parawood is only harvested after it completes it's latex producing cycle and would otherwise die. The wood is eco-friendly in the sense that we are now fully utilizing material that was previously going to waste.

Re-forestation and sustainability are, as they have always been, defining characteristics of the rubber industry. Parawood represents a model for sustainability, waste reduction, re-purposing and environmental responsibility.

Allied Desks and Tables comply with MAS requirements for environmental safety in indoor environments.



Allied manufactures desks and tables that meet ADA standards. Please see website for details.



Warranty

Allied Plastics Co., Inc. warrants for a period of 30½ years or 366 months, whichever comes first, to the original purchaser that every Allied product is free from defects in workmanship and material, under normal use and service. All moving parts, to include but not limited to glides, casters, hinges, fabric and revolving platforms, etc, are warranted for 5 years against defects in workmanship or manufacture under normal use and service. All pneumatic lifts, electromechanical parts, and electronic assemblies are warranted for 2 years against defects in workmanship or manufacture under normal use and service. Allied's obligation under this warranty is limited to the replacement or repair, at Allied's option, completely without charge for material or labor, of any part found defective by Allied. Shipping charges remain the responsibility of the purchaser.

This Warranty is in lieu of all other warranties expressed or implied, and any representations or promises inconsistent with or in addition to this warranty are unauthorized and shall not be binding upon Allied. In no event shall Allied be liable for any special or consequential damages, whether or not foreseeable.

This Warranty shall be void if the product has been subjected to misuse or has been damaged by negligence or accident, or if it has been repaired or altered by anyone other than authorized agents of Allied.

Terms and Conditions

Purchase Orders: All purchase orders must contain complete and accurate Allied Plastics Co., Inc. (Allied) model numbers. Processing of incomplete orders received by Allied will be delayed until complete order entry data is received. Orders can be placed by mail to Allied, 2001 Walnut Street, Jacksonville FL 32206, or by email to orders@alliedusa.com. Dealers assume full responsibility for supplying correct information when placing verbal orders, and must supply written confirmation within 24 hours for order accuracy verification.

Order Changes: All order changes must be sent to Allied in writing and are subject to Allied's approval. Allied will make changes where possible, but reserves the right to reject order changes once production has already commenced. Changes in colors, sizes and/or models will not be possible once products have entered production or special materials have been ordered from our vendors. Changes in quantities and models ordered may be accepted by Allied, but lead times could be extended depending upon the timeliness of our receiving requests for order changes.

Pricing: All prices listed are F.O.B. Jacksonville, Florida 32206. Prices and specifications are subject to change without prior notice. Possession of Allied literature or price lists does not constitute an offer to sell.

Terms of Sale: NET 30 days with approved credit. Orders without approved credit will not be placed into production unless payment is received in advance, and once approved for internal release could be subject to extended lead times. Past due accounts are subject to a finance charge of 1.5% per month. Credit terms may be changed or canceled at the discretion of Allied. Product to be billed within seven days of original ship date, with seven days storage at no charge.

Long Term Storage: If delivery cannot be accepted on the acknowledgment date, Alliedhas the right to store the merchandise at the expense and risk of the customer. An additional storage charge of 1% per week will be added to the invoice total starting one week after the acknowledgment date.

Shipping Information: All merchandise is carefully inspected and cartoned before shipment. Title for goods immediately passes to purchaser, and Allied's responsibility ceases once shipment is accepted or transported by any carrier from our factory. Carrier routing will be established by our Traffic Department if not indicated on purchaser's order.

Carefully inspect all shipments for accuracy or damage before acceptance. If a shipment is damaged or short, note damage or shortage on the carrier freight bill at the time of acceptance, and file a claim for appropriate damages or shortages with the carrier. Concealed damage must be reported to Allied within seven days from the date of delivery. All damage/ shortage claims must be filed directly with the delivering carrier. We will not accept responsibility for products damaged in transit nor will we accept products that are returned because they have been damaged in transit.

The freight classification on most tables is Class 70, F.O.B. Jacksonville, FL 32206. Select other products may have different freight classifications. Please refer to the price list for those freight classifications.

Services, such as; Inside Delivery, Delivery to a Private Residence, Call Notice Before Delivery, Lift Gate Required, and No Loading Dock, will incur additional charges. Please call Allied or your carrier for details.

Customer Pick-Up: Customer pick-up is available. All customer pick-ups must be scheduled at least 48 hours in advance and coordinated through the Allied Shipping Department. All orders staged for customer pick-up are held/stored free of charge for two days. At the discretion of Allied, orders for customers that miss scheduled appointments will be restocked, or those customers could be assessed storage charges based upon order size and the length of time stored.

Shipping Lead Times: Allied endeavors to ship product in the shortest possible lead time. Many of our products are IN-STOCK for immediate shipment on a year-round basis. These products carry a QS next to their model numbers in the price list. All other products ship in established lead times based upon season and availability. From September 15th through June 15th, lead times normally average 10 to 20 working days or less. From June 16th through September 14th, lead times normally average 15 to 30 working days or less. Special orders of all kinds are welcome, but could require longer lead times.

Cancellations: Cancellations or changes are subject to Allied approval. No cancellations or changes to orders will be accepted once production of an order has begun or "special materials" have been ordered from our vendors. Higher cancellation charges are likely on "special orders".

Returns: All tops are made to order and not returnable. No product/ merchandise will be accepted for return without a RAN (Return Authorization Number) issued by Allied. After receipt of the RAN, returned merchandise must be shipped freight prepaid and is subject to a 30% restocking/handling charge, unless the return is deemed by Allied to be the factory's responsibility following an internal evaluation. Merchandise approved for return must arrive at the Allied's warehouse in resalable condition. Merchandise returned in less than first quality condition could be subject to higher restocking/handling charges. Allied reserves the right to assess higher restock/ handling charges based upon our inspection of the returned merchandise.

Bids: Allied welcomes the opportunity to furnish, upon request, special price assistance in the form of written price quotations in bid situations. All dealers are encouraged to contact our bid department for special pricing on advertised bids.

Superseding Authority: Allied's Terms, Conditions and Warranty supersede any add-on terms submitted by dealers on their purchase orders.



The Versatile Innovation Maker Table Combines Industrial Strength with Incredible Flexibility. Shown Above is a 12 foot Conference Table. This Sample Shows a Fusion Maple HPL Top with Matching Edge Band and Dynamic Blue Legs.



Velocity Span Tables Provide Total Flexibility to Create Infinite Work Spaces From Auditorium Seating, To Circular Collaborative Environments and Stand Alone Activity Tables. Shown Above Are 30x70" SPAN-LG Tables With Fusion Maple Tops, Dynamic Blue Legs and Edge Bands, With Optional Casters. Adjustable Height Legs Allow Velocity Tables To Be Aligned With Existing Tables to Expand Virtually Any Current Work Surfaces. The Precision Leg mounting System Provides Perfect Alignment And Easy Assembly.



INNOVATIVE DESIGNS
FOR CREATIVE SPACES

Allied Plastics Co., Inc.
2001 Walnut Street Jacksonville, FL 32206
(904) 359-0386

www.alliedusa.com